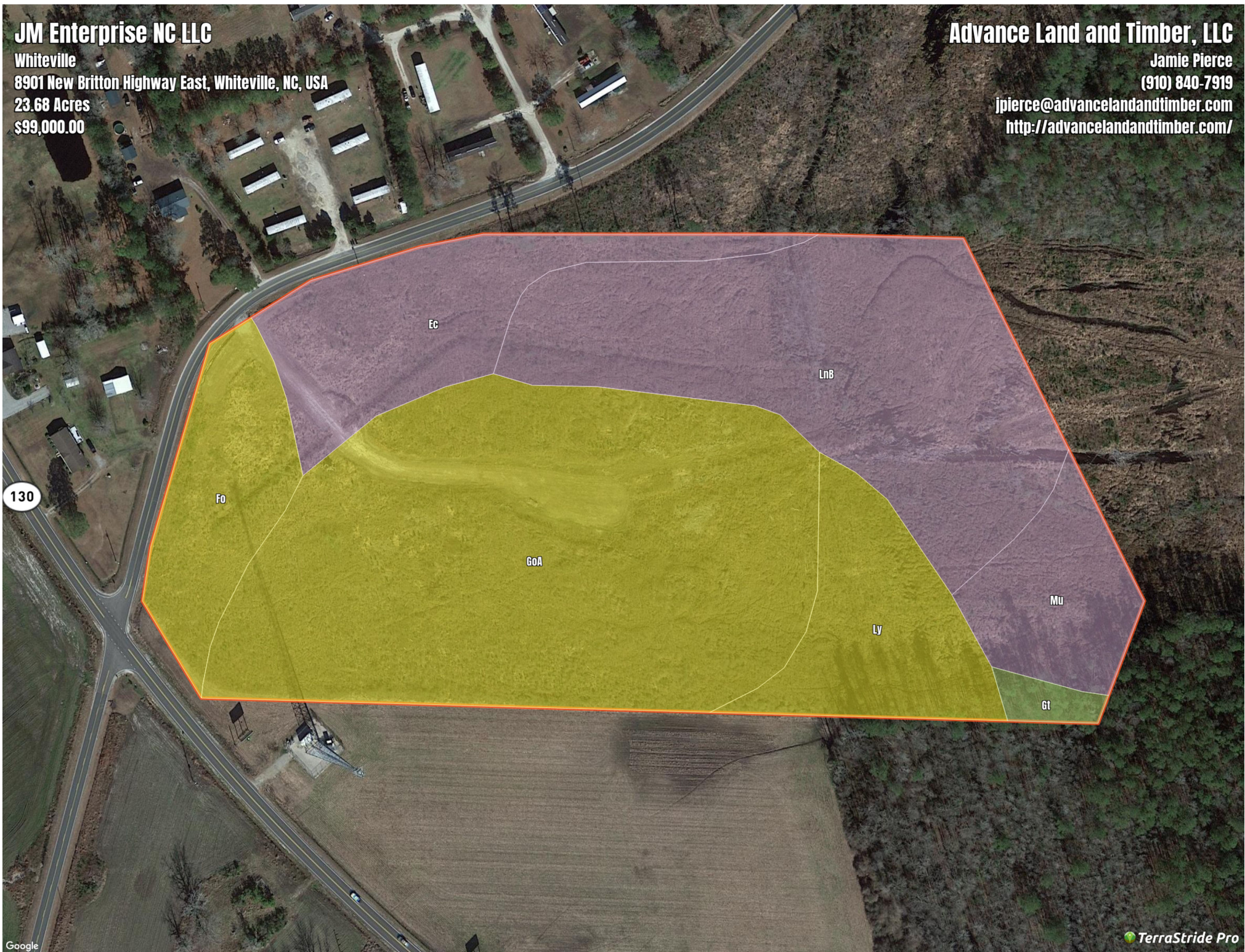


# JM Enterprise NC LLC

Whiteville  
8901 New Britton Highway East, Whiteville, NC, USA  
23.68 Acres  
\$99,000.00

# Advance Land and Timber, LLC

Jamie Pierce  
(910) 840-7919  
jpierce@advancelandandtimber.com  
<http://advancelandandtimber.com/>



# JM Enterprise NC LLC

## Soil Report

Symbol	Map Unit Description	Formal Name	Area (AC)	Available Water Storage (0-150cm - Weighted Average)	Flooding Frequency (Maximum)	Drainage Class (Dominant Condition)	Drainage Class (Wettest Component)	Hydric Classification	Water Table Depth (Annual Minimum)	Water Table Depth (April to June Minimum)	Bedrock Depth (Minimum)	Soil Order
GoA	Goldsboro fine sandy loam, 0 to 2 percent slopes	All areas are prime farmland	0	20.5	None	Moderately well drained	Moderately well drained	5	61	91	0	Ultisols
LnB	Leonsand, 1 to 4 percent slopes	Farmland of unique importance	0	9.5	None	Poorly drained	Poorly drained	80	15	15	0	Spodosols
EC	Echaw loamy sand	Not prime farmland	0	11.4	None	Moderately well drained	Moderately well drained	10	76	152	0	Spodosols
Ly	Lynchburg fine sandy loam	Prime farmland if drained	0	18.8	None	Somewhat poorly drained	Somewhat poorly drained	7	15	76	0	Ultisols
Fo	Fores-ton loamy fine sand	Farmland of statewide importance	0	15.3	None	Moderately well drained	Moderately well drained	5	61	91	0	Ultisols
MU	Murville fine sand	Farmland of unique importance	0	11.9	None	Very poorly drained	Very poorly drained	90	0	0	0	Spodosols
Gt	Grifton fine sandy loam	Prime farmland if drained	0	20.7	None	Poorly drained	Poorly drained	90	0	15	0	Alfisols