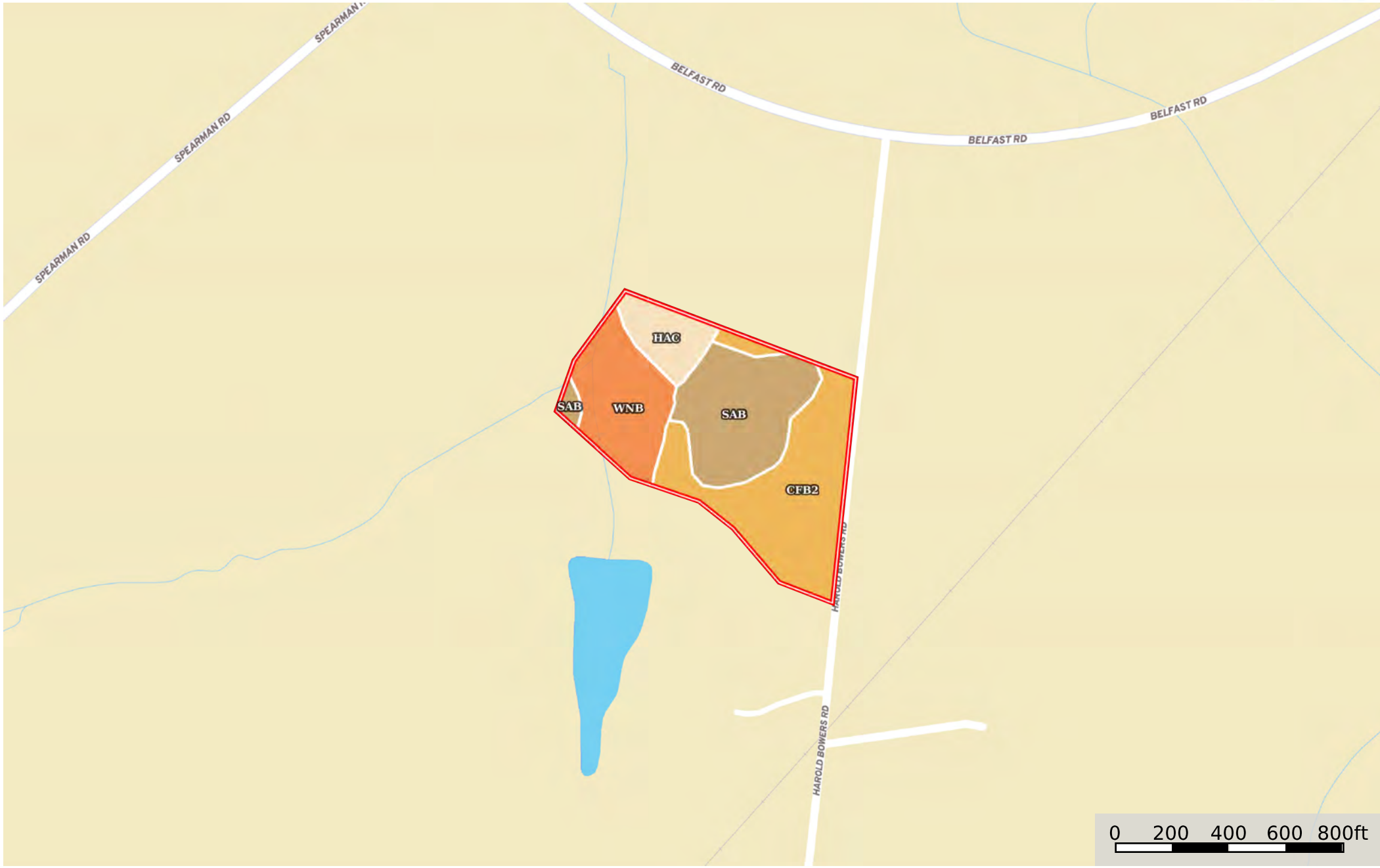


C136-2 SC Newberry County-NC&HB Farms

Newberry County, South Carolina, 15 AC +/-



 Boundary

Boundary 14.66 ac

SOIL CODE	SOIL DESCRIPTION	ACRES	%	CPI	NCCPI	CAP
CfB2	Cecil sandy clay loam, 2 to 6 percent slopes, moderately eroded	5.83	39.77	0	71	3e
SaB	Santuc loamy coarse sand, 2 to 6 percent slopes	4.26	29.06	0	62	2e
WnB	Winnsboro sandy loam, 2 to 6 percent slopes	3.15	21.49	0	50	2e
HaC	Hard Labor sandy loam, 6 to 10 percent slopes	1.42	9.69	0	66	3e
TOTALS		14.66(*)	100%	-	63.39	2.49

(*) Total acres may differ in the second decimal compared to the sum of each acreage soil. This is due to a round error because we only show the acres of each soil with two decimal.

