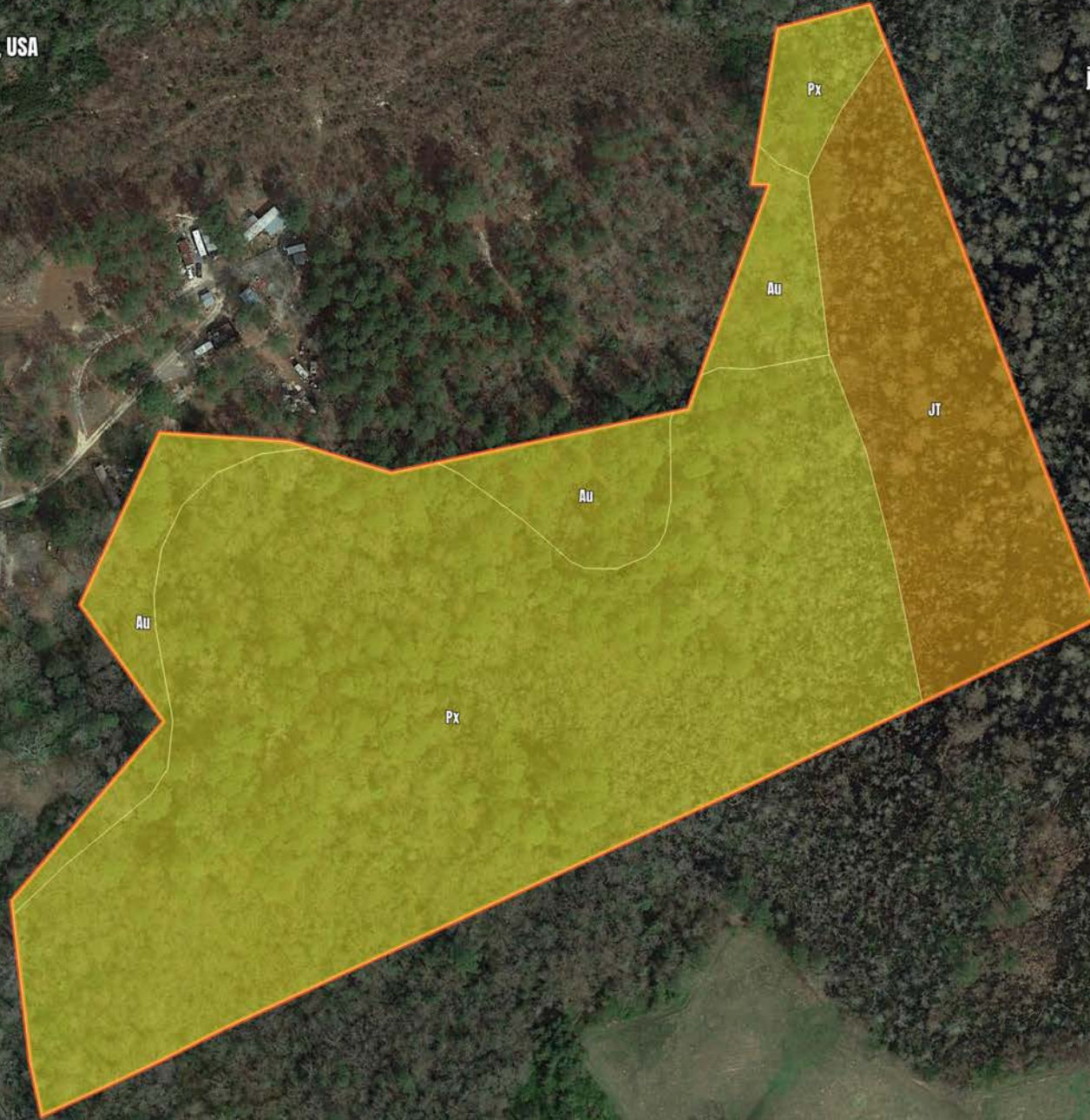


Sampson Co, NC-CAS Wildlife Properties 18 acres

Roseboro
Hayne Stretch Road, Roseboro, NC, USA
18.73 Acres
\$39,000.00

Advance Land and Timber, LLC

Jamie Pierce
(910) 840-7919
jpierce@advancelandandtimber.com
<http://advancelandandtimber.com/>



Sampson Co, NC-CAS Wildlife Properties 18 acres

Soil Report

Symbol	Map Unit Description	Farm Land Class	Area (AC)	Available Water Storage (0-150cm - Weighted Average)	Flooding Frequency (Maximum)	Drainage Class (Dominant Condition)	Drainage Class (Wettest Component)	Hydric Classification	Water Table Depth (Annual Minimum)	Water Table Depth (April to June Minimum)	Bedrock Depth (Minimum)	Soil Order
PX	Paxville fine sandy loam	Prime farmland if drained and either protected from flooding or not frequently flooded	0	18.5	Rare	Very poorly drained	Very poorly drained	90	0	0	0	Ultisols
JT	Johnston mucky loam	Not prime farmland	0	23.7	Frequent	Very poorly drained	Very poorly drained	100	0	0	0	Inceptisols
AU	Autryville loamy sand, 0 to 6 percent slopes	Farm Land of state wide importance	0	12.4	None	Well drained	Well drained	0	122	183	0	Ultisols