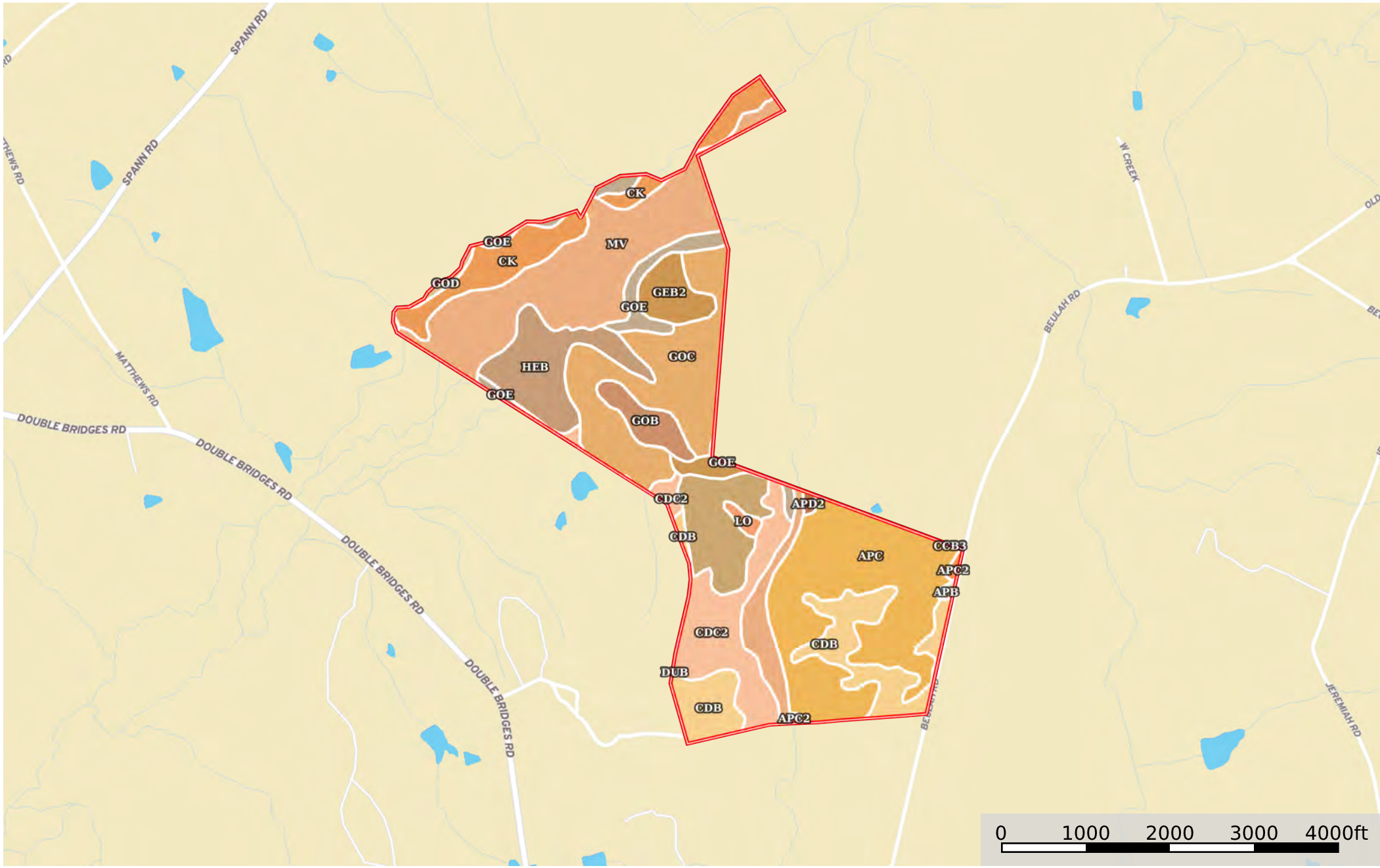


C130 SC Saluda County- Boulderdash Farms

Saluda County, South Carolina, 418.86 AC +/-



Boundary

 Boundary 422.46 ac

SOIL CODE	SOIL DESCRIPTION	ACRES	%	CPI	NCCPI	CAP
Mv	Toccoa-Chewacla complex, 0 to 2 percent slopes, frequently flooded	84.84	20.08	0	58	3w
ApC	Appling sandy loam, 6 to 10 percent slopes	80.27	19.0	0	74	3e
GoC	Nanford silt loam, 6 to 10 percent slopes	56.92	13.47	0	66	3e
CdB	Cecil sandy loam, 2 to 6 percent slopes	37.95	8.98	0	66	2e
CdC2	Cecil sandy loam, 6 to 10 percent slopes, moderately eroded	36.32	8.6	0	69	3e
Ck	Chewacla silt loam, 0 to 2 percent slopes, occasionally flooded	28.42	6.73	0	72	3w
HeB	Helena sandy loam, 2 to 6 percent slopes	28.05	6.64	0	76	2e
CcB3	Cecil clay loam, 2 to 6 percent slopes, severely eroded	23.69	5.61	0	67	3e
GeB2	Georgeville silt loam, 2 to 6 percent slopes, moderately eroded	15.12	3.58	0	69	2e
GoE	Tarrus silt loam, 15 to 30 percent slopes	14.59	3.45	0	58	4e
GoB	Nanford silt loam, 2 to 6 percent slopes	9.72	2.3	0	61	2e
Lo	Local alluvial land	1.93	0.46	0	66	2e
GoD	Nanford silt loam, 10 to 15 percent slopes	1.82	0.43	0	62	3e
ApC2	Appling sandy loam, 6 to 10 percent slopes, eroded	1.13	0.27	0	71	3e
ApD2	Appling sandy loam, 10 to 20 percent slopes, eroded	0.8	0.19	0	67	4e
ApB	Appling sandy loam, 2 to 6 percent slopes	0.79	0.19	0	75	2e
DuB	Durham sandy loam, 2 to 6 percent slopes	0.1	0.02	0	67	2e
TOTALS		422.46(*)	100%	-	67.02	2.81









(*) Total acres may differ in the second decimal compared to the sum of each acreage soil. This is due to a round error because we only show the acres of each soil with two decimal.

Capability Legend

Increased Limitations and Hazards

Decreased Adaptability and Freedom of Choice Users

Land, Capability

								
	1	2	3	4	5	6	7	8
'Wild Life'	•	•	•	•	•	•	•	•
Forestry	•	•	•	•	•	•	•	
Limited	•	•	•	•	•	•	•	
Moderate	•	•	•	•	•	•		
Intense	•	•	•	•	•			
Limited	•	•	•	•				
Moderate	•	•	•					
Intense	•	•						
Very Intense	•							

Grazing Cultivation

(c) climatic limitations (e) susceptibility to erosion

(s) soil limitations within the rooting zone (w) excess of water