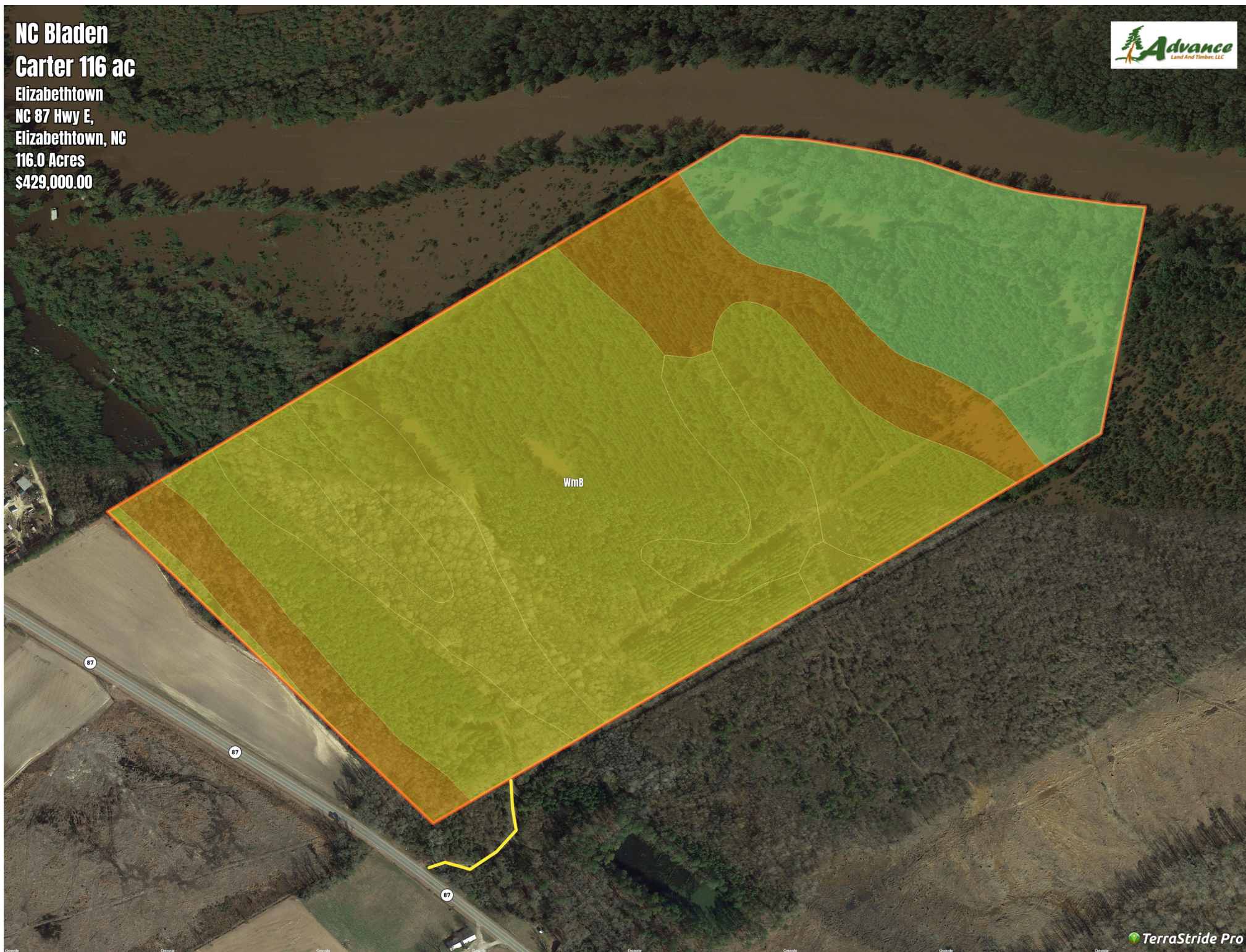


**NC Bladen**  
**Carter 116 ac**  
Elizabethtown  
NC 87 Hwy E,  
Elizabethtown, NC  
116.0 Acres  
\$429,000.00





# NC Bladen Carter 116 ac

## Soil Report

S ymbol	Ma p Unit De scription	Fa rmla nd cla s s	Are a (AC)	Ava ila ble Wa te r S tora ge (0-150cm - We ighte d Ave ra ge )	Flooding Fre que ncy (Ma ximum)	Dra ina ge Cla s s (Domina nt Condition)	Dra ina ge Cla s s (We tte s t Compone nt)	Hydric Cla s s ifica tion	Wa te r Ta ble De pth (Annua l Minimum)	Wa te r Ta ble De pth (April to June Minimum)	Be drock De pth (Minimum)	S oil Orde r
WmB	Wickham fine sandy loam, 1 to 6 percent slopes	All areas are prime farmland	53.97	22.3	Rare	Well drained	Well drained	5	0	0	0	Ultisols
Cn	Congaree silt loam, frequently flooded	Prime farmland if protected from flooding or not frequently flooded during the g	23.77	23.6	Frequent	Moderately well drained	Moderately well drained	5	99	122	0	Entisols
Ca	Cape Fear loam	Farmland of statewide importance	17.35	20.7	None	Very poorly drained	Very poorly drained	95	15	46	0	Ultisols
Ch	Chewacla and Chastain soils, frequently flooded	Not prime farmland	11.69	22.4	Frequent	Poorly drained	Poorly drained	80	15	15	0	Inceptisols
DyF	Dys trochrepts, steep	Not prime farmland	5.79	23.7	None	Moderately well drained	Moderately well drained	0	84	107	0	Inceptisols
Ro	Roanoke loam	Farmland of statewide importance	0.75	21.9	Occasional	Poorly drained	Poorly drained	100	0	15	0	Ultisols
NoB	Norfolk loamy fine sand, 2 to 6 percent slopes	All areas are prime farmland	0.74	19.1	None	Well drained	Well drained	5	122	152	0	Ultisols
ExA	Exum very fine sandy loam, 0 to 3 percent slopes	All areas are prime farmland	0.14	27.0	None	Moderately well drained	Moderately well drained	5	61	91	0	Ultisols