

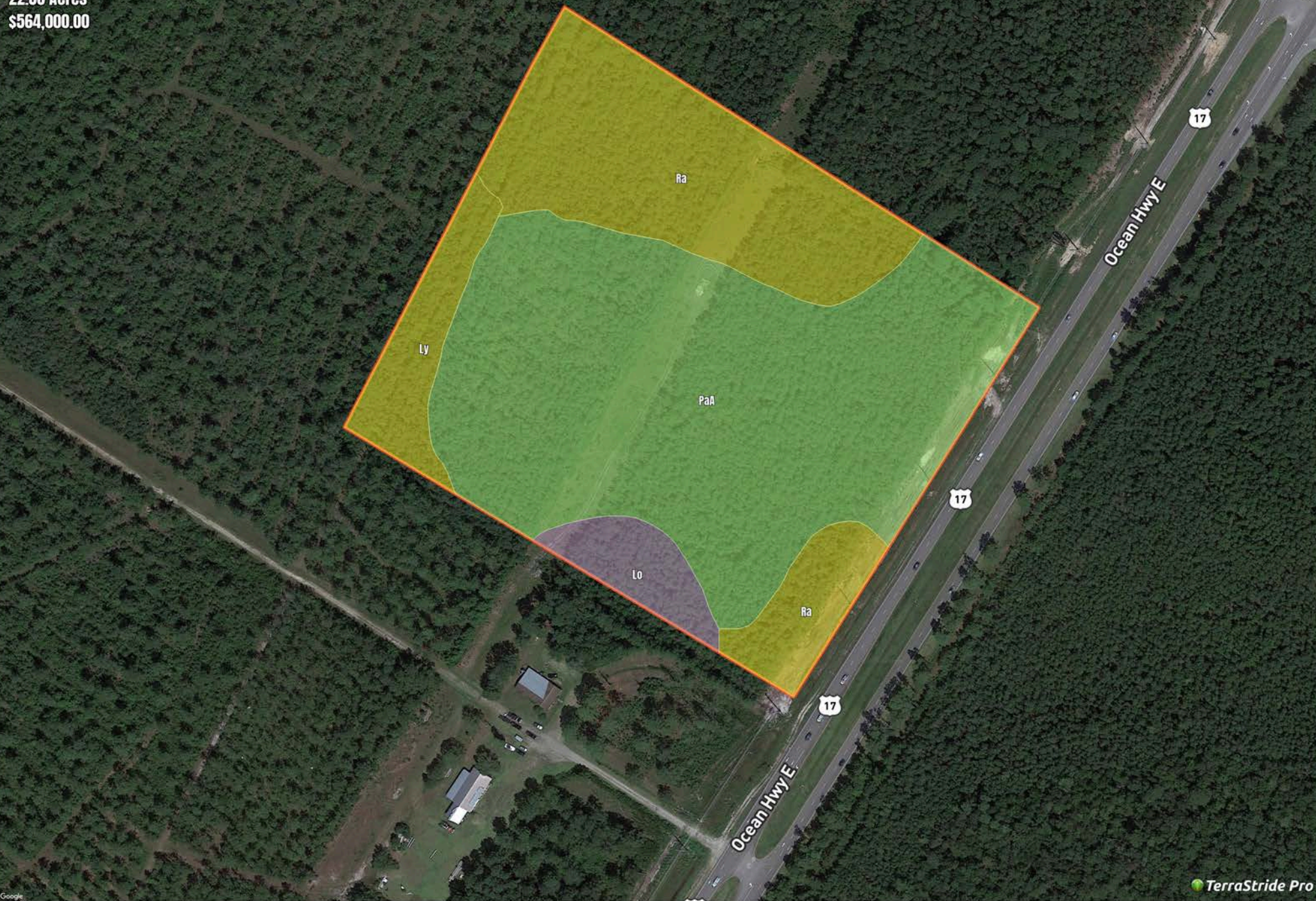
B618-Brunswick County, NC-Mercer

Bolivia

4655 Ocean Hwy E, Bolivia, NC, USA

22.56 Acres

\$564,000.00



B618-Brunswick County, NC-Mercer

Soil Report

Symbol	Map Unit Description	Farmland class	Area (AC)	Available Water Storage (0-150cm - Weighted Average)	Flooding Frequency (Maximum)	Drainage Class (Dominant Condition)	Drainage Class (Wettest Component)	Hydric Classification	Water Table Depth (Annual Minimum)	Water Table Depth (April to June Minimum)	Bedrock Depth (Minimum)	Soil Order
PaA	Pactolus fine sand, 0 to 2 percent slopes	Not prime farmland	0	10.7	Rare	Moderately well drained	Moderately well drained	6	61	76	0	Entisols
Ra	Rains fine sandy loam	Prime farmland if drained	0	23.6	None	Poorly drained	Poorly drained	90	15	46	0	Ultisols
Ly	Lynchburg fine sandy loam	Prime farmland if drained	0	18.8	None	Somewhat poorly drained	Somewhat poorly drained	7	15	76	0	Ultisols
LO	Leon fine sand	Farmland of unique importance	0	10.3	None	Poorly drained	Poorly drained	85	15	15	0	Spodosols