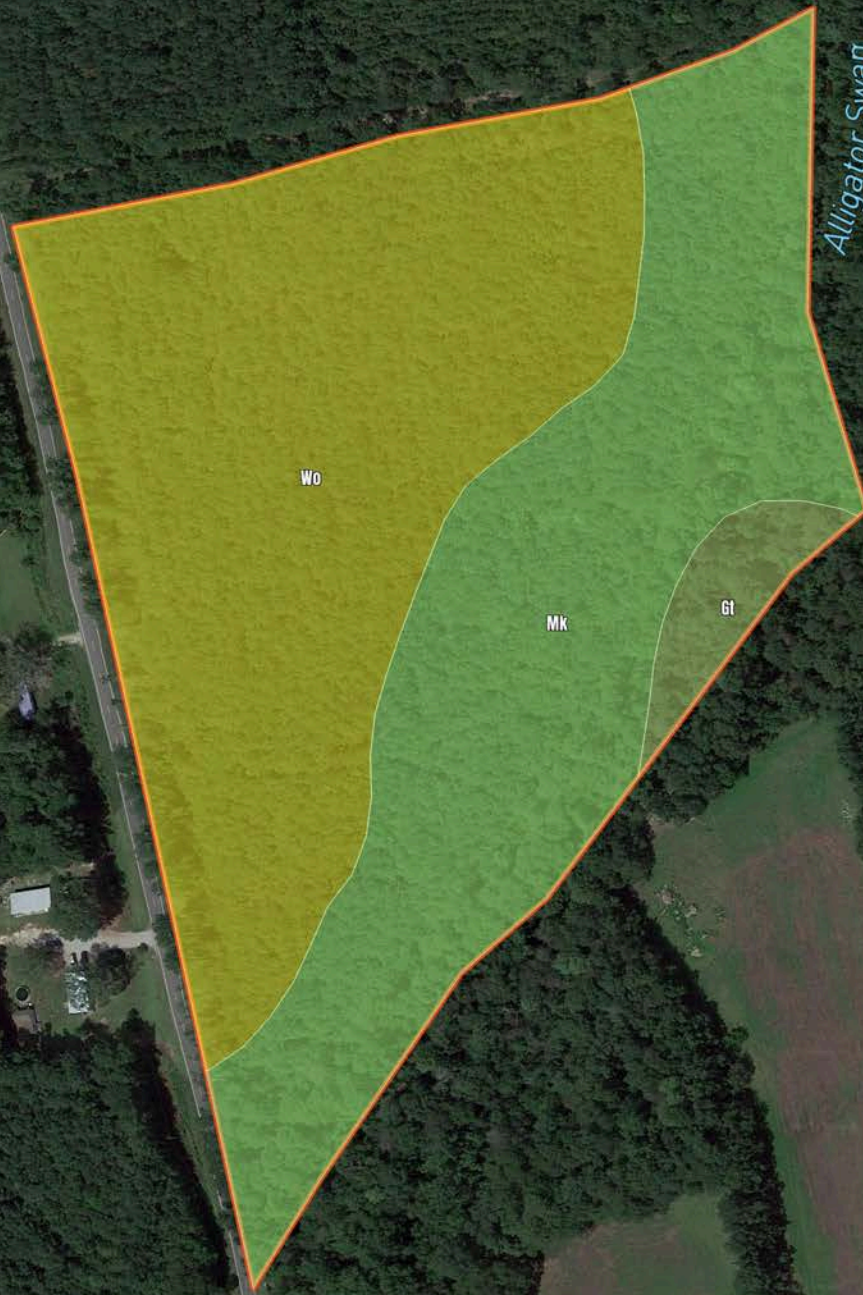


**B554-Brunswick County, NC-Bay Branch, LLC**

20.0 Acres  
\$120,000.00



Alligator Swamp

# B554-Brunswick County, NC-Bay Branch, LLC

## Soil Report

Symbol	Map Unit Description	Farmland class	Area (AC)	Available Water Storage (0-150cm - Weighted Average)	Flooding Frequency (Maximum)	Drainage Class (Dominant Condition)	Drainage Class (Wettest Component)	Hydric Classification	Water Table Depth (Annual Minimum)	Water Table Depth (April to June Minimum)	Bedrock Depth (Minimum)	Soil Order
Wo	Woodington fine sandy loam	Prime farmland if drained	0	19.5	None	Poorly drained	Poorly drained	90	15	81	0	Ultisols
Mk	Muckalee loam	Not prime farmland	0	16.2	Frequent	Poorly drained	Poorly drained	80	15	23	0	Entisols
Gt	Grifton fine sandy loam	Prime farmland if drained	0	20.7	None	Poorly drained	Poorly drained	90	0	15	0	Alfisols