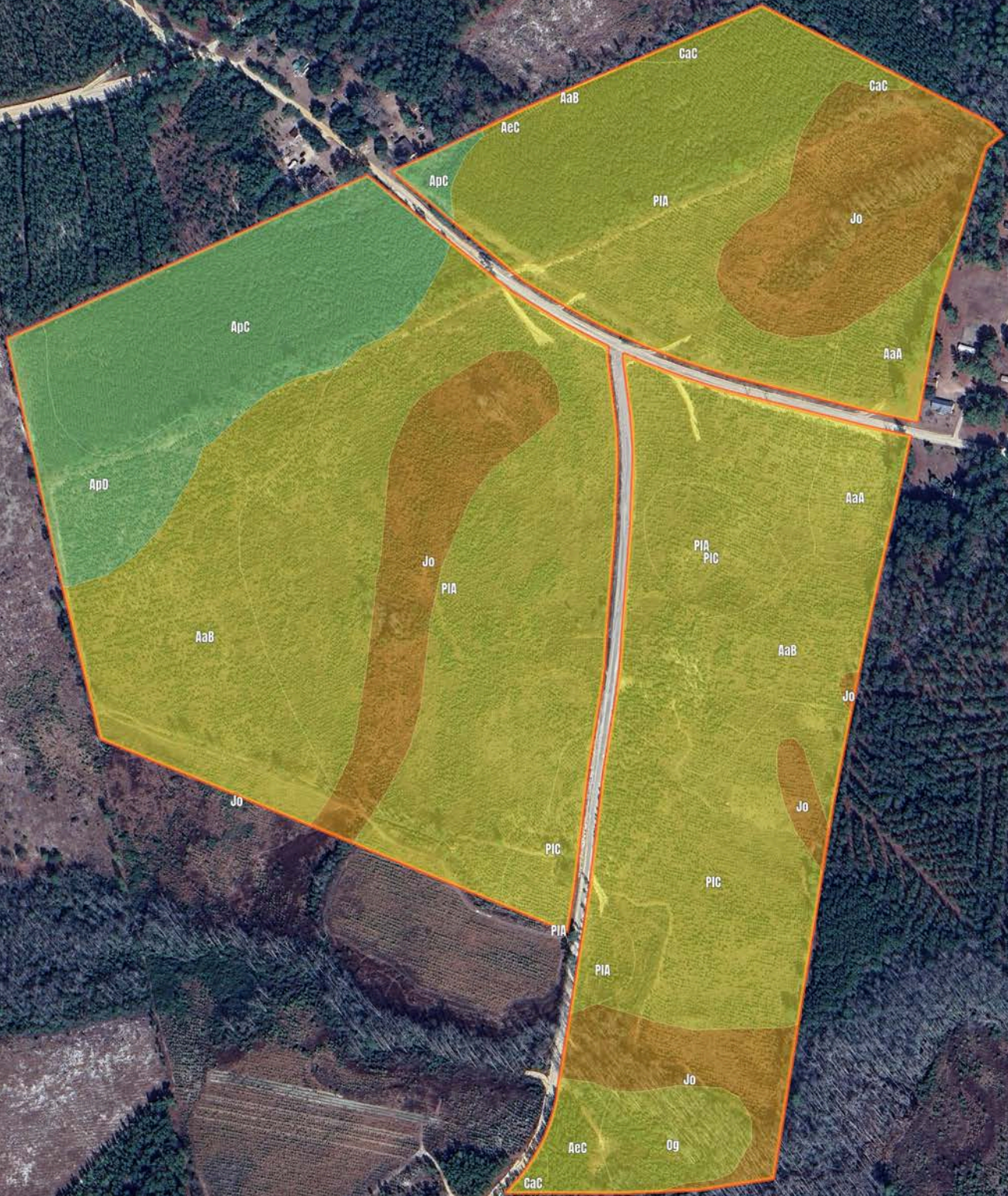


Tract 6566 - SC Chesterfield Co
138.0 Acres



Tract 6566 - SC Chesterfield Co

Soil Report

Symbol	Map Unit Description	Farmland class	Area (AC)	Available Water Storage (0-150cm - Weighted Average)	Flooding Frequency (Maximum)	Drainage Class (Dominant Condition)	Drainage Class (Wettest Component)	Hydric Classification	Water Table Depth (Annual Minimum)	Water Table Depth (April to June Minimum)	Bedrock Depth (Minimum)	Soil Order
PIA	Pelion loamy sand, 0 to 2 percent slopes	Farmland of statewide importance	0	12.5	None	Moderately well drained	Moderately well drained	2	30	53	0	Ultisols
Jo	Johnston sandy loam, frequently flooded	Not prime farmland	0	17.1	Frequent	Very poorly drained	Very poorly drained	90	0	0	0	Inceptisols
PIC	Pelion loamy sand, 6 to 10 percent slopes	Not prime farmland	0	12.5	None	Moderately well drained	Moderately well drained	2	30	53	0	Ultisols
AaB	Alley sand, moderately wet, 2 to 6 percent slopes	Farmland of statewide importance	0	9.3	None	Well drained	Well drained	2	122	122	0	Ultisols
ApC	Alpin sand, 6 to 10 percent slopes	Not prime farmland	0	10.2	None	Excessively drained	Excessively drained	2	0	0	0	Entisols
AaA	Alley sand, moderately wet, 0 to 2 percent slopes	Farmland of statewide importance	0	9.3	None	Well drained	Well drained	2	122	122	0	Ultisols
ApD	Alpin sand, 10 to 15 percent slopes	Not prime farmland	0	10.2	None	Excessively drained	Excessively drained	2	0	0	0	Entisols
Og	Ogeechee sandy loam	Farmland of statewide importance	0	17.3	None	Poorly drained	Poorly drained	95	0	0	0	Ultisols
AeC	Alley sand, 6 to 10 percent slopes	Not prime farmland	0	9.3	None	Well drained	Well drained	2	0	0	0	Ultisols
CaC	Candor sand, 6 to 10 percent slopes	Farmland of statewide importance	0	7.9	None	Somewhat excessively drained	Somewhat excessively drained	2	0	0	0	Ultisols