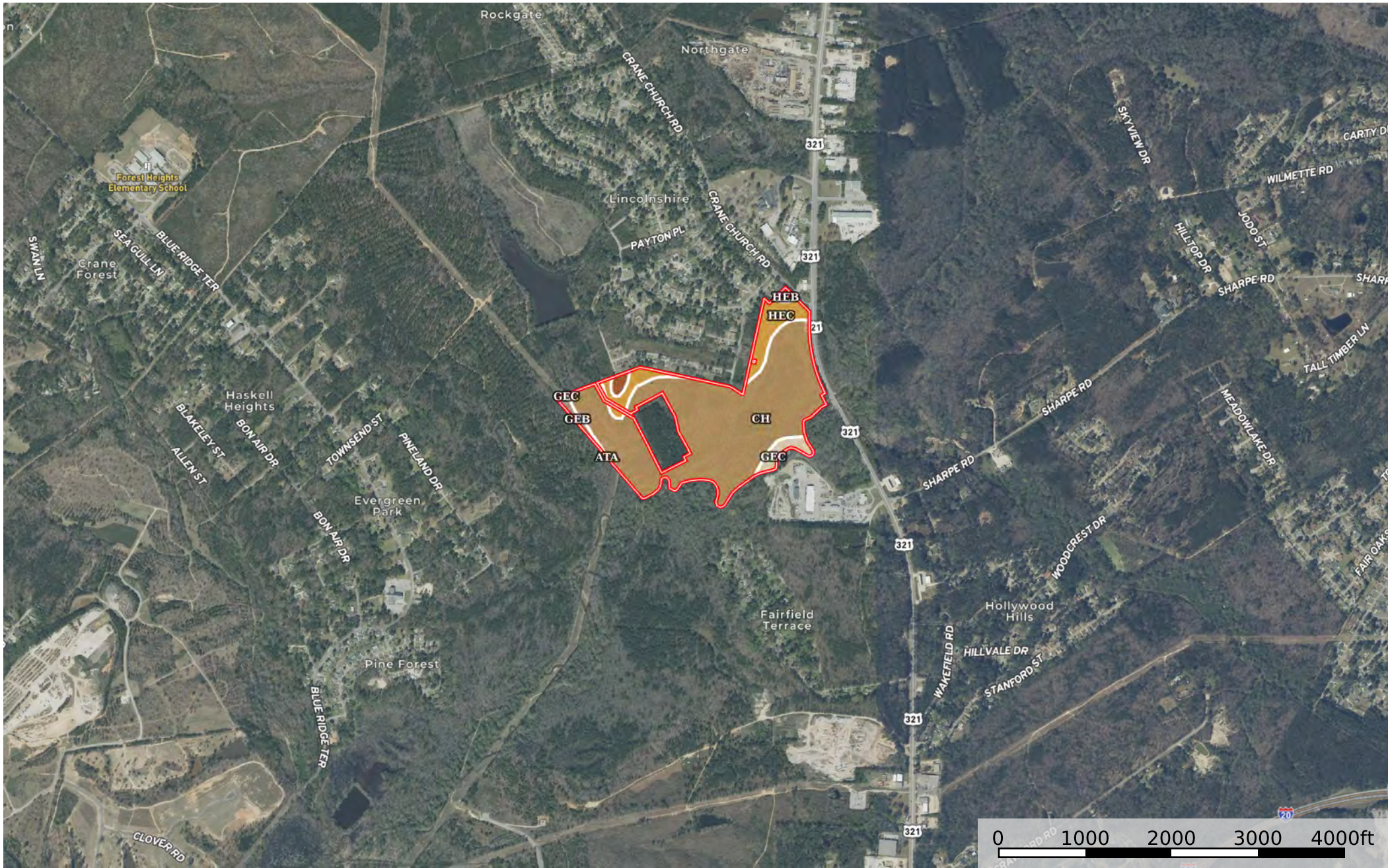


C110 SC Richland County Crane Creek

Richland County, South Carolina, 83.16 AC +/-



 Boundary

Boundary 75.22 ac

SOIL CODE	SOIL DESCRIPTION	ACRES	%	CPI	NCCPI	CAP
CH	Chewacla soils	61.2	81.37	0	73	3w
HeC	Herndon silt loam, 6 to 10 percent slopes	8.88	11.81	0	73	3e
GeC	Georgeville silt loam, 6 to 10 percent slopes	2.48	3.3	0	75	3e
HeB	Herndon silt loam, 2 to 6 percent slopes	1.48	1.97	0	71	2e
GeB	Georgeville silt loam, 2 to 6 percent slopes	1.15	1.53	0	78	2e
AtA	Altavista silt loam, 0 to 2 percent slopes	0.03	0.04	0	70	2w
TOTALS		75.22(*)	100%	-	73.11	2.96

(*) Total acres may differ in the second decimal compared to the sum of each acreage soil. This is due to a round error because we only show the acres of each soil with two decimal.

