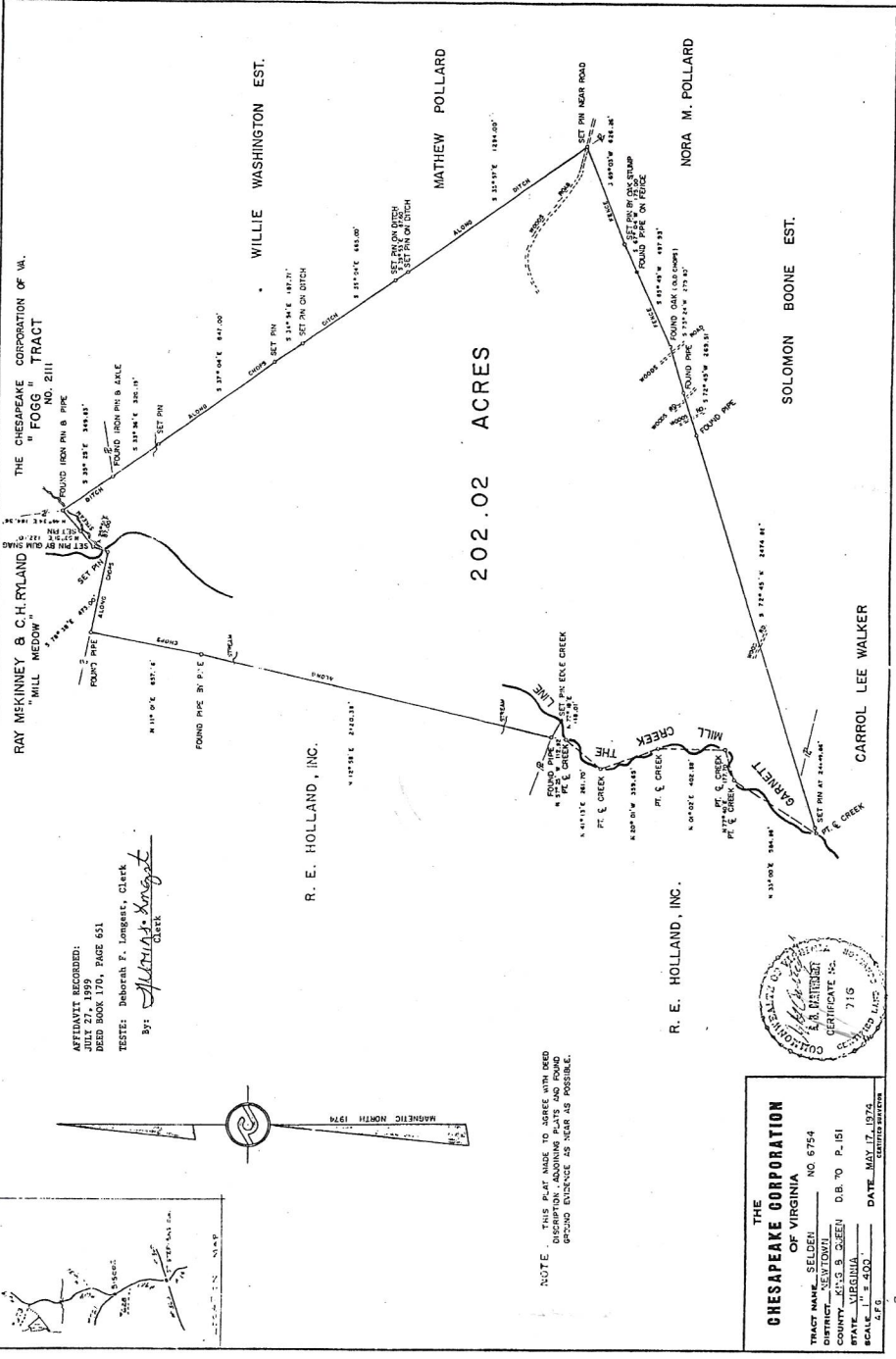


Selden Tract #6754

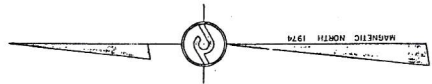
All that certain tract or parcel of land, lying and being in Newtown District, King and Queen County, Virginia, containing 202.02 acres per plat by R. B. Cartwright, C.L.S., dated May 17, 1974 recorded in the Clerk's Office, Circuit Court, King and Queen County in Plat Book 20, page 66.

Being a part of the same real estate conveyed to John Hancock Mutual Life Insurance Company, a Massachusetts corporation, by Deed from Chesapeake Forest Products Company, LLC, a Virginia limited liability company, successor by merger to Chesapeake Forest Products Company, a Virginia corporation, dated September 10, 1999 and recorded September 13, 1999 in the Clerk's Office of the Circuit Court of King and Queen County, Virginia in Deed Book 172, Page 1.



AFFIDAVIT RECORDED:
 JULY 27, 1959
 DEED BOOK 170, PAGE 651

TESTES: Deborah F. Longest, Clerk
 By: *Alvin A. King*
 CLERK



NOTE: THIS PLAT MADE TO AGREE WITH DEED DESCRIPTION, ADJOINING PLATS AND FOUND GROUND EVIDENCE AS NEAR AS POSSIBLE.



THE CHESAPEAKE CORPORATION OF VIRGINIA
 TRACT NAME: SELDEN NO. 6754
 DISTRICT: NEWTOWN D.B. TO P. 151
 COUNTY: KING'S & QUEEN
 STATE: VIRGINIA
 SCALE: 1" = 400'
 DATE: MAY 17, 1974
 2 P. 1



RECORDED IN THE OFFICE OF THE CLERK OF THE SUPREME COURT OF VIRGINIA