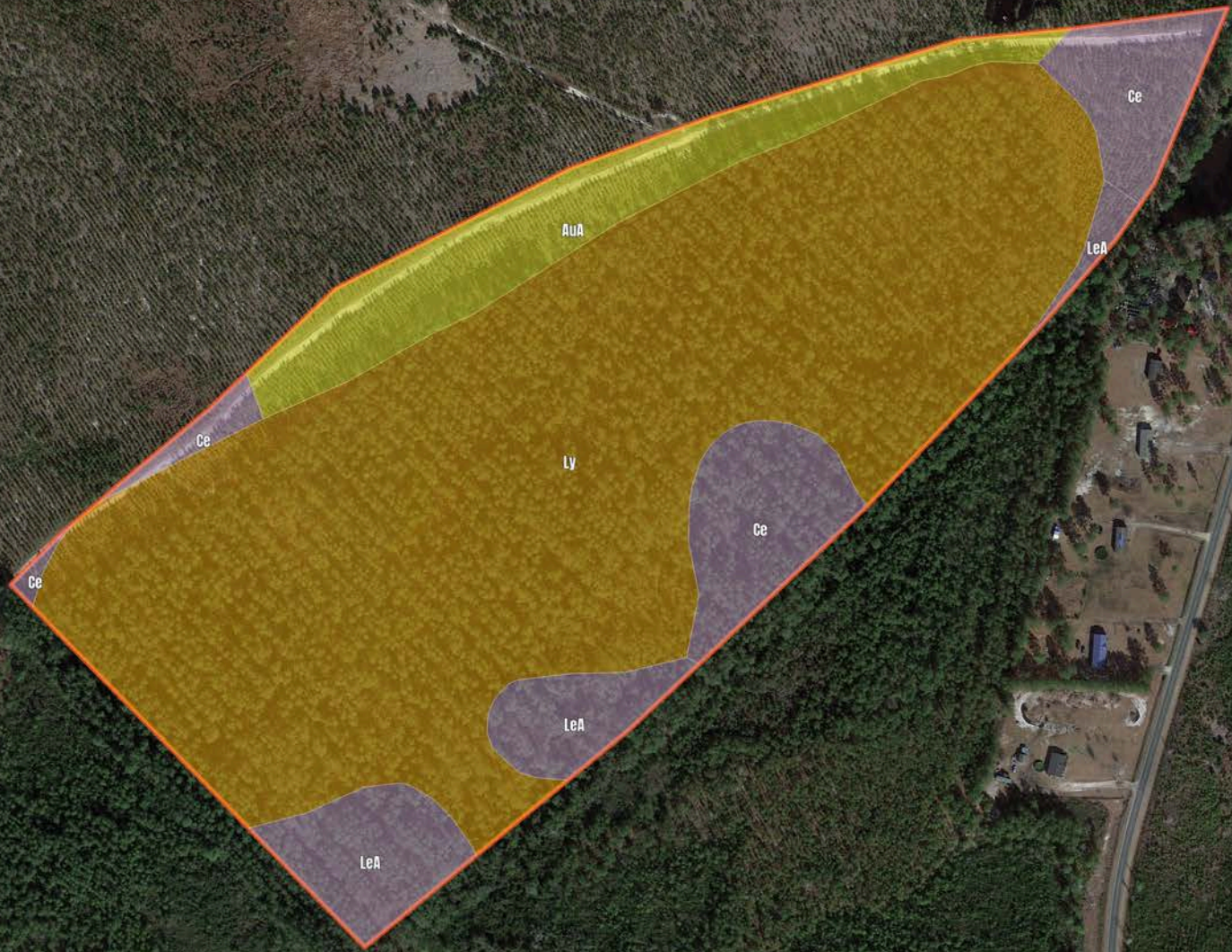


B527 - Site C-Sassafras Timber

60.84 Acres

\$304,200.00



B527 – Site C-Sassafras Timber

Soil Report

Symbol	Map Unit Description	Farmland class	Area (AC)	Available Water Storage (0-150cm - Weighted Average)	Flooding Frequency (Maximum)	Drainage Class (Dominant Condition)	Drainage Class (Wettest Component)	Hydric Classification	Water Table Depth (Annual Minimum)	Water Table Depth (April to June Minimum)	Bedrock Depth (Minimum)	Soil Order
Ly	Lynn Haven and Torhunta soils	Prime farmland if drained	0	21.7	Rare	Very poorly drained	Very poorly drained	90	0	15	0	Inceptisols
AuA	Autryville loamy sand, 0 to 3 percent slopes	Farmland of statewide importance	0	12.4	None	Well drained	Well drained	0	122	183	0	Ultisols
Ce	Centenary sand	Not prime farmland	0	11.6	None	Well drained	Well drained	5	107	152	0	Spodosols
LeA	Leon sand, 0 to 3 percent slopes	Farmland of unique importance	0	9.5	None	Poorly drained	Poorly drained	80	15	15	0	Spodosols