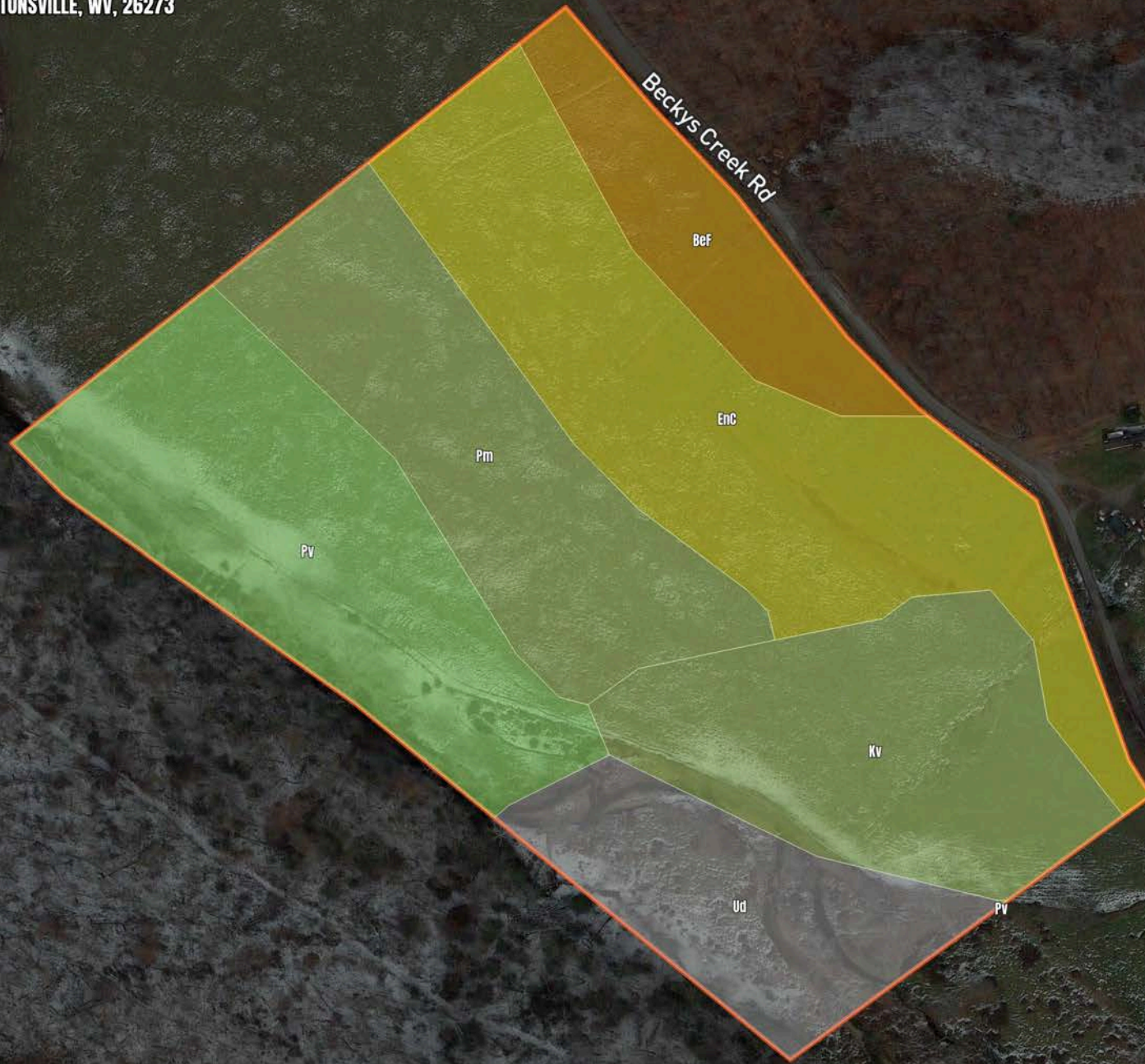


B557-Randolph Co, WV-PH Timber-Becky's Creek-26 acres

Huttonsville
ROUTE 43 BECKY'S CREEK, HUTTONSVILLE, WV, 26273
26.0 Acres
\$130,000.00



B557-Randolph Co, WV-PH Timber-Becky's Creek-26 acres

Soil Report

Symbol	Map Unit Description	Farmland class	Area (AC)	Available Water Storage (0-150cm - Weighted Average)	Flooding Frequency (Maximum)	Drainage Class (Dominant Condition)	Drainage Class (Wettest Component)	Hydric Classification	Water Table Depth (Annual Minimum)	Water Table Depth (April to June Minimum)	Bedrock Depth (Minimum)	Soil Order
EnC	Ernest silt loam, moist, 8 to 15 percent slopes	Farmland of statewide importance	0	18.0	None	Moderately well drained	Moderately well drained	5	43	43	0	Ultisols
Pv	Pope variant gravelly sandy loam	Not prime farmland	0	7.7	Occasional	Somewhat excessively drained	Somewhat excessively drained	0	0	0	0	Entisols
Pm	Philo variant silt loam	All areas are prime farmland	0	23.6	Rare	Moderately well drained	Moderately well drained	0	69	69	0	Alfisols
Kv	Kanawha variant gravelly loam	All areas are prime farmland	0	22.8	Rare	Well drained	Well drained	0	0	0	0	Alfisols
Ud	Udfluvents, cobbly	Not prime farmland	0	0.0	Frequent			0	76	76	0	
BeF	Berks channery silt loam, 35 to 70 percent slopes	Not prime farmland	0	6.5	None	Well drained	Well drained	0	0	0	89	Inceptisols