

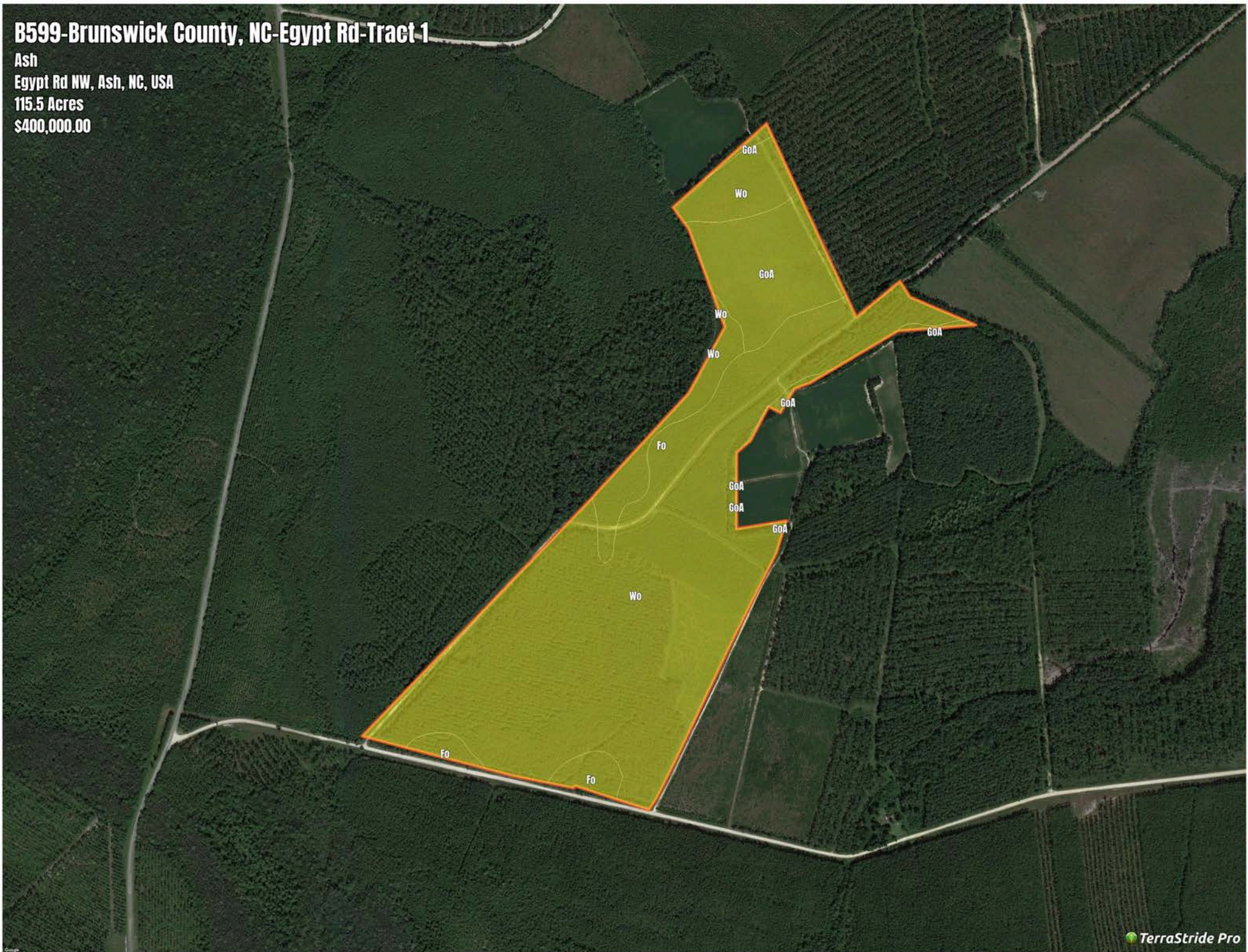
B599-Brunswick County, NC-Egypt Rd-Tract 1

Ash

Egypt Rd NW, Ash, NC, USA

115.5 Acres

\$400,000.00



B599-Brunswick County, NC-Egypt Rd-Tract 1

Soil Report

Symbol	Map Unit Description	Farmland class	Area (AC)	Available Water Storage (0-150cm - Weighted Average)	Flooding Frequency (Maximum)	Drainage Class (Dominant Condition)	Drainage Class (Wettest Component)	Hydric Classification	Water Table Depth (Annual Minimum)	Water Table Depth (April to June Minimum)	Bedrock Depth (Minimum)	Soil Order
Wo	Woodington fine sandy loam	Prime farmland if drained	0	19.5	None	Poorly drained	Poorly drained	90	15	81	0	Ultisols
GoA	Goldsboro fine sandy loam, 0 to 2 percent slopes	All areas are prime farmland	0	20.5	None	Moderately well drained	Moderately well drained	5	61	91	0	Ultisols
Fo	Foreston loamy fine sand	Farmland of statewide importance	0	15.3	None	Moderately well drained	Moderately well drained	5	61	91	0	Ultisols