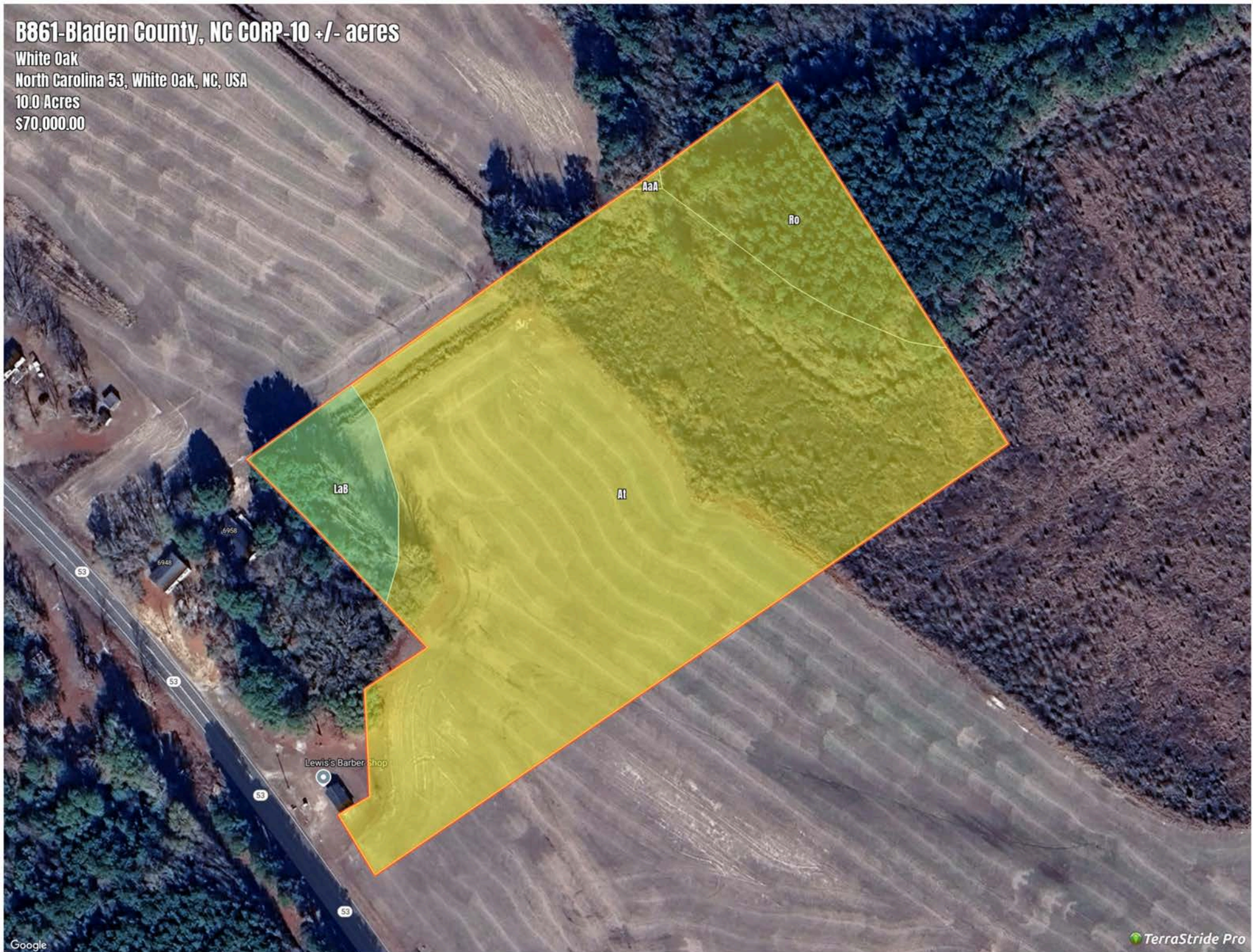


B861-Bladen County, NC CORP-10 +/- acres

White Oak
North Carolina 53, White Oak, NC, USA
10.0 Acres
\$70,000.00



B861-Bladen County, NC CORP-10 +/- acres

Soil Report

| Symbol | Map Unit Description | Farmland class | Area (AC) | Available Water Storage (0-150cm - Weighted Average) | Flooding Frequency (Maximum) | Drainage Class (Dominant Condition) | Drainage Class (Wettest Component) | Hydric Classification | Water Table Depth (Annual Minimum) | Water Table Depth (April to June Minimum) | Bedrock Depth (Minimum) | Soil Order |
|--------|--|----------------------------------|-----------|--|------------------------------|-------------------------------------|------------------------------------|-----------------------|------------------------------------|---|-------------------------|------------|
| At | Augusta sandy loam | Prime farmland if drained | 0 | 21.8 | Occasional | Somewhat poorly drained | Somewhat poorly drained | 7 | 30 | 61 | 0 | Ultisols |
| Ro | Roanoke loam | Farmland of statewide importance | 0 | 21.9 | Occasional | Poorly drained | Poorly drained | 100 | 0 | 15 | 0 | Ultisols |
| LaB | Lakeland sand, 1 to 7 percent slopes | Not prime farmland | 0 | 9.9 | None | Excessively drained | Excessively drained | 5 | 0 | 0 | 0 | Entisols |
| AaA | Altavista fine sandy loam, 0 to 3 percent slopes | All areas are prime farmland | 0 | 23.8 | Rare | Moderately well drained | Moderately well drained | 9 | 61 | 76 | 0 | Ultisols |