

$\Delta = 07^{\circ}51'53''$
 $R = 2838.41$
 $T = 195.14$
 $L = 389.66$
 $CH = 389.35$
 $CH BR = N75^{\circ}39'07''E$

$\Delta = 01^{\circ}00'34''$
 $R = 2838.41$
 $T = 25.00$
 $L = 50.01$
 $CH = 50.01$
 $CH BR = N80^{\circ}05'22''E$

$\Delta = 60^{\circ}31'38''$
 $R = 339.90$
 $T = 196.33$
 $L = 359.07$
 $CH = 342.60$
 $CH BR = S43^{\circ}29'42''E$

$\Delta = 15^{\circ}43'12''$
 $R = 476.27$
 $T = 60.51$
 $L = 120.27$
 $L = 131.24$
 $CH = 130.83$
 $CH BR = S28^{\circ}05'34''E$

$\Delta = 09^{\circ}46'15''$
 $R = 2778.41$
 $T = 237.48$
 $L = 473.81$
 $CH = 473.24$
 $CH BR = S76^{\circ}36'16''W$

$\Delta = 15^{\circ}43'12''$
 $R = 476.27$
 $T = 60.51$
 $L = 120.27$
 $L = 131.24$
 $CH = 130.83$
 $CH BR = S28^{\circ}05'34''E$

BEARINGS & DISTANCES FROM POINT 31 TO
 POINT 50 ALONG ROUTE 606 & ROUTE 40.

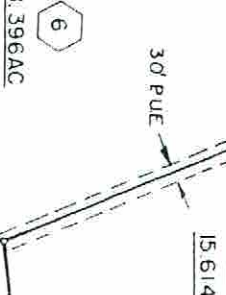
BEARINGS & DISTANCES FROM POINT 51
 TO POINT 67 ALONG CENTERLINE OF OLD
 ROAD SCAR & CREEK TO ROUTE 40.

BEARINGS & DISTANCES FROM POINT 37B
 TO POINT 38 ALONG CEMETERY.

BEARINGS & DISTANCES FROM POINT 51
 TO POINT 67 ALONG CENTERLINE OF OLD
 ROAD SCAR & CREEK TO ROUTE 40.

BEARINGS & DISTANCES FROM POINT 51
 TO POINT 67 ALONG CENTERLINE OF OLD
 ROAD SCAR & CREEK TO ROUTE 40.

BEARINGS & DISTANCES FROM POINT 51
 TO POINT 67 ALONG CENTERLINE OF OLD
 ROAD SCAR & CREEK TO ROUTE 40.



CHESAPEAKE CORP
 DB 539 PG 71
 (PLAT DB 98 PG 166)

CHRISTINE H MAYHEW
 SEE PB 30 PG 83

FROM POINT 2A
 CREEK IS PRG
 BEARING & D
 FOR COMPUTA
 AREA ONLY.

BEARINGS & DISTANCES FROM POINT 51
 TO POINT 67 ALONG CENTERLINE OF OLD
 ROAD SCAR & CREEK TO ROUTE 40.

BEARINGS & DISTANCES FROM POINT 51
 TO POINT 67 ALONG CENTERLINE OF OLD
 ROAD SCAR & CREEK TO ROUTE 40.

BEARINGS & DISTANCES FROM POINT 51
 TO POINT 67 ALONG CENTERLINE OF OLD
 ROAD SCAR & CREEK TO ROUTE 40.