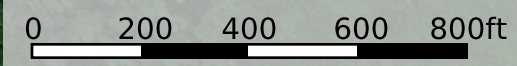
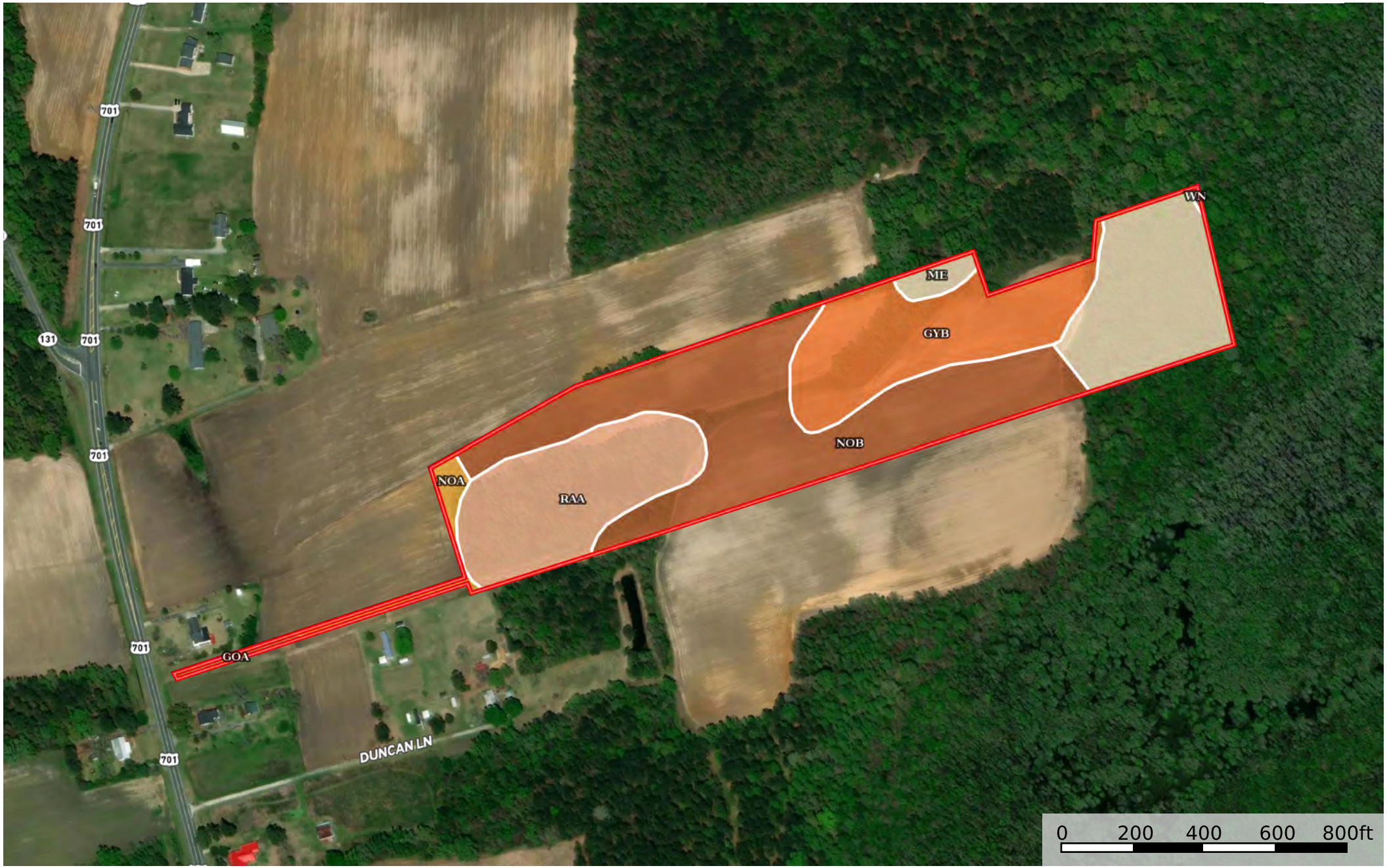


+/- 22.61 ac Owens Columbus KR
Columbus County, North Carolina, 22.61 AC +/-



 Boundary

Boundary 23.13 ac

SOIL CODE	SOIL DESCRIPTION	ACRES	%	CPI	NCCPI	CAP
NoB	Norfolk loamy fine sand, 2 to 6 percent slopes	8.88	38.38	0	72	2e
GyB	Gritney loamy fine sand, 2 to 7 percent slopes	4.65	20.1	0	73	3e
RaA	Rains fine sandy loam, 0 to 2 percent slopes, Southern Coastal Plain	4.48	19.36	0	68	4w
Me	Meggett fine sandy loam, frequently flooded	4.41	19.06	0	52	6w
NoA	Norfolk loamy fine sand, 0 to 2 percent slopes	0.54	2.33	0	72	1
GoA	Goldsboro fine sandy loam, 0 to 2 percent slopes	0.14	0.61	0	62	2w
Wn	Wilbanks silt loam, frequently flooded	0.03	0.13	0	62	6w
TOTALS		23.14(*)	100%	-	67.51	3.33

(*) Total acres may differ in the second decimal compared to the sum of each acreage soil. This is due to a round error because we only show the acres of each soil with two decimal.

