

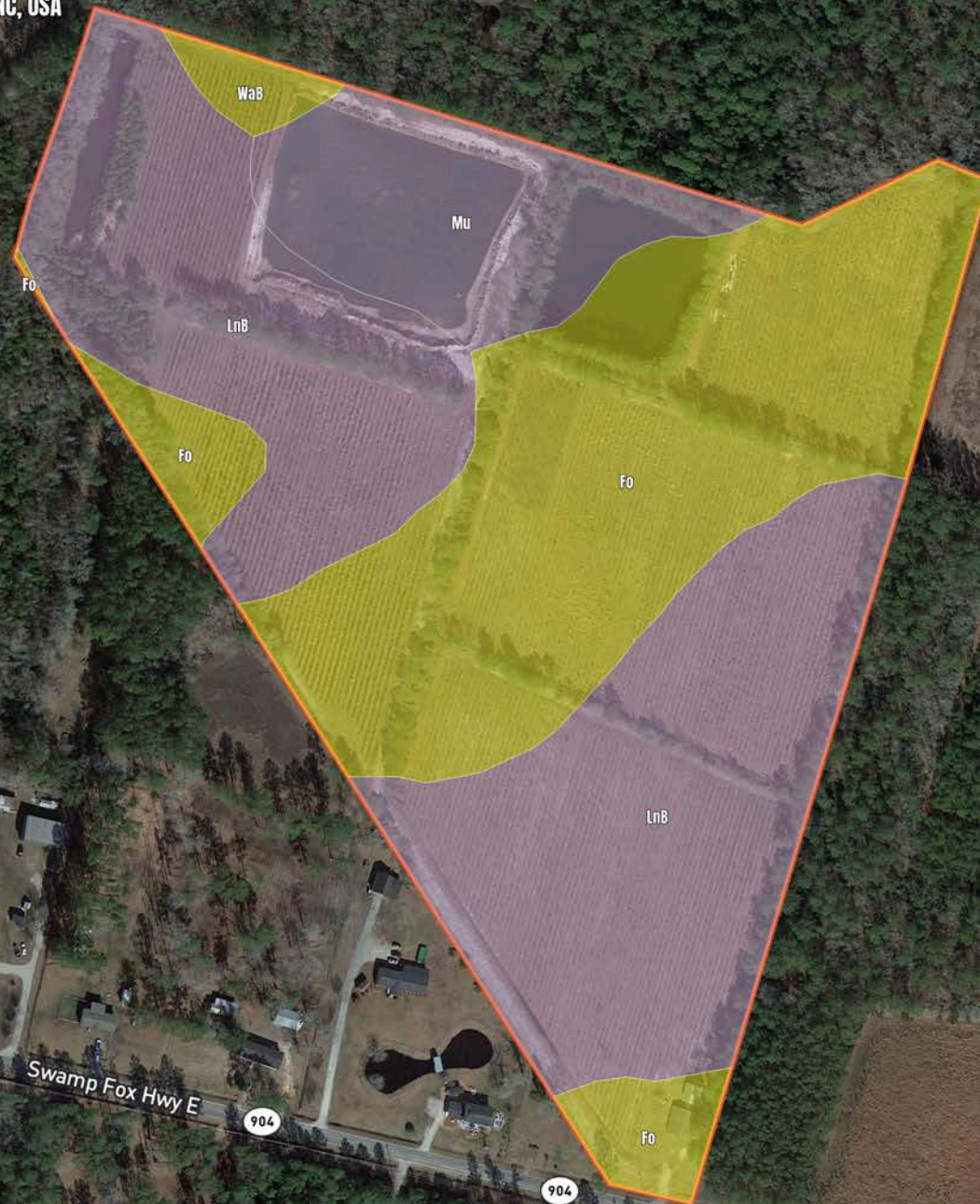
B-Columbus County, NC-Farmstead Holdings Tract 6

Tabor City

14061 Swamp Fox Highway East, Tabor City, NC, USA

35.2 Acres

\$345,000.00



B-Columbus County, NC-Farmstead Holdings Tract 6

Soil Report

| Symbol | Map Unit Description | Farmland class | Area (AC) | Available Water Storage (0-150cm - Weighted Average) | Flooding Frequency (Maximum) | Drainage Class (Dominant Condition) | Drainage Class (Wettest Component) | Hydric Classification | Water Table Depth (Annual Minimum) | Water Table Depth (April to June Minimum) | Bedrock Depth (Minimum) | Soil Order |
|--------|---|----------------------------------|-----------|--|------------------------------|-------------------------------------|------------------------------------|-----------------------|------------------------------------|---|-------------------------|------------|
| LnB | Leon sand, 1 to 4 percent slopes | Farmland of unique importance | 0 | 9.5 | None | Poorly drained | Poorly drained | 80 | 15 | 15 | 0 | Spodosols |
| Fo | Foreston loamy fine sand | Farmland of statewide importance | 0 | 15.3 | None | Moderately well drained | Moderately well drained | 5 | 61 | 91 | 0 | Ultisols |
| Mu | Murville fine sand | Farmland of unique importance | 0 | 11.9 | None | Very poorly drained | Very poorly drained | 90 | 0 | 0 | 0 | Spodosols |
| WaB | Wagram loamy fine sand, 0 to 6 percent slopes | Farmland of statewide importance | 0 | 16.7 | None | Well drained | Well drained | 0 | 192 | 203 | 0 | Ultisols |