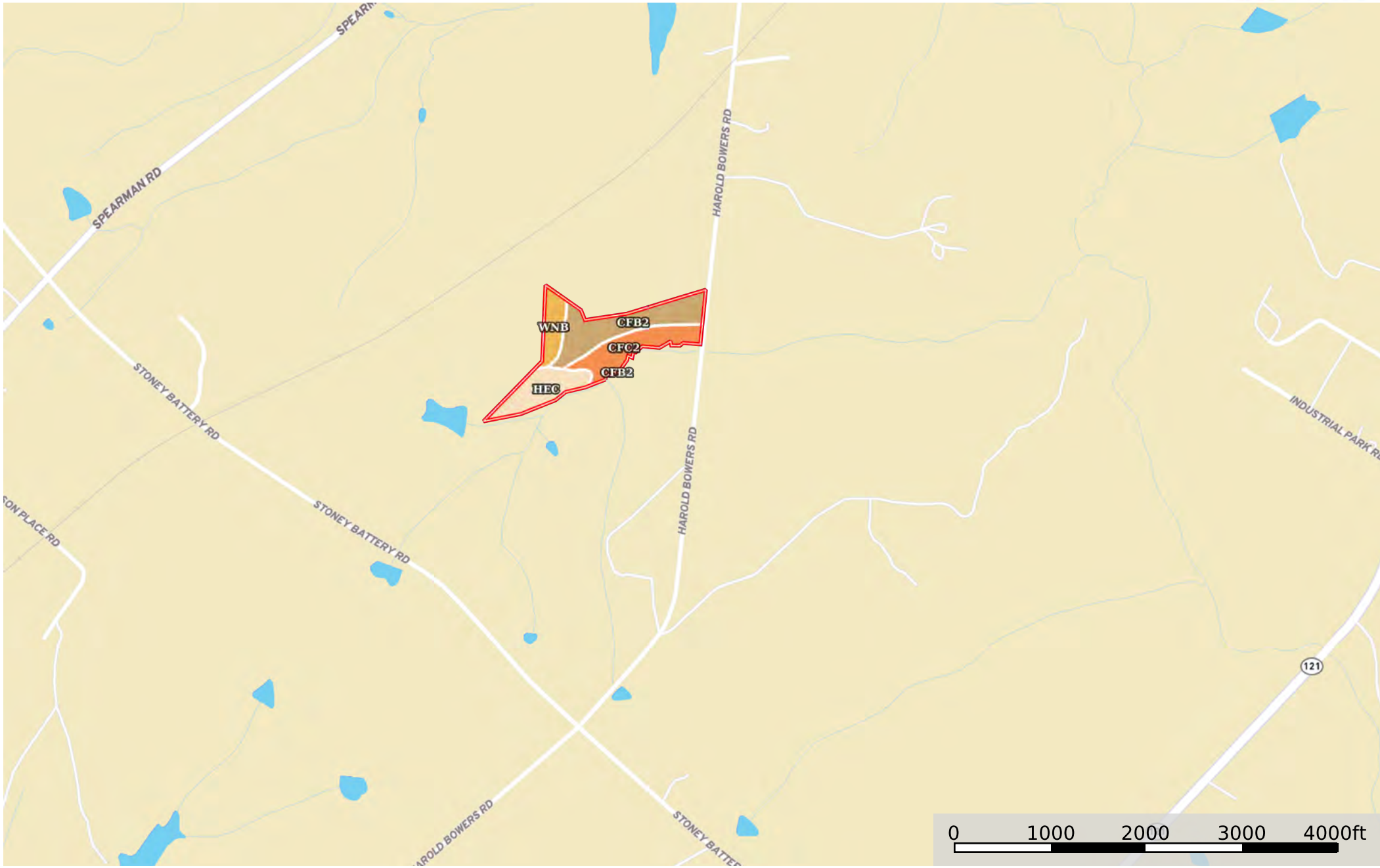


# C137-1 SC Newberry County-NC&HB Farms

Newberry County, South Carolina, 30 AC +/-



Boundary

Boundary 28.28 ac

SOIL CODE	SOIL DESCRIPTION	ACRES	%	CPI	NCCPI	CAP
CfB2	Cecil sandy clay loam, 2 to 6 percent slopes, moderately eroded	10.72	37.91	0	71	3e
CfC2	Cecil sandy clay loam, 6 to 10 percent slopes, moderately eroded	7.56	26.73	0	69	4e
HeC	Helena sandy loam, 6 to 10 percent slopes	6.42	22.7	0	65	3e
WnB	Winnsboro sandy loam, 2 to 6 percent slopes	3.58	12.66	0	50	2e
TOTALS		28.28(*)	100%	-	66.44	3.14

(\*) Total acres may differ in the second decimal compared to the sum of each acreage soil. This is due to a round error because we only show the acres of each soil with two decimal.

