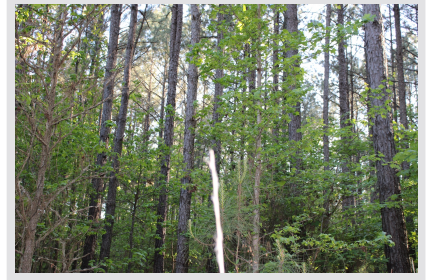
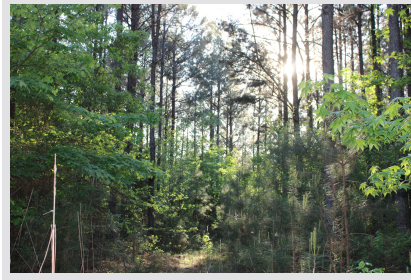




Tract B185 - SR 2407 (SOLD)

340 Acres
Greenwood County, South Carolina
Property Price :



Acreage:

340.12 +/- Acres

General Description:

Investment:

Tax ID:

Agent:

Mark McMillan

803-957-9503

Cole McMillan

803-960-4630

✉ contact@advancelandandtimber.com

📞 (803) 957-9503

www.advancelandandtimber.com

Location/Directions:

From Callison, travel east on Callison Road approximately 1.6 miles and turn right onto Bedford Road. Continue for .60 of a mile and turn right onto Bethel Road, or continue on Bedford where property fronts on the right side until the intersection of Scotts Ferry Road. Turn right onto Scotts Ferry and parcel continues on the right for approximately .70 of a mile (with the exception of the homesite).