



✉ contact@advancelandandtimber.com

📞 (803) 957-9503

www.advancelandandtimber.com

129 Acres - Tishomingo County, Mississippi

Tract 7641 (New Listing)



### Acreage

129 Acres

### General Description

Recently harvested and replanted, this tract will allow the buyer to opportunity to get on the front end of managing this property. Gated access from east and west sides of property. Close to luka, MS and only a 25-minute drive from Corinth, MS. This property is suitable for a variety of recreational uses or just sitting back and watching your timber grow!

### Location / Directions:

From luka, MS, take MS 172 West for 2.3 miles, then right onto County Road 232 for .5 mile.

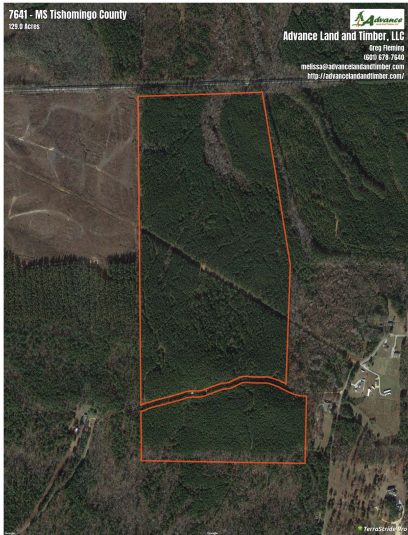
### Agent:

Greg Fleming  
601-678-7640

Aerial Map 

7641 - MS Tishomingo County  
25.9 Acres

  
Advance Land and Timber, LLC  
Step Fleming  
6630 6th Street  
Metcalf@advancelandtimber.com  
http://advancelandtimber.com/



Parsons Inc