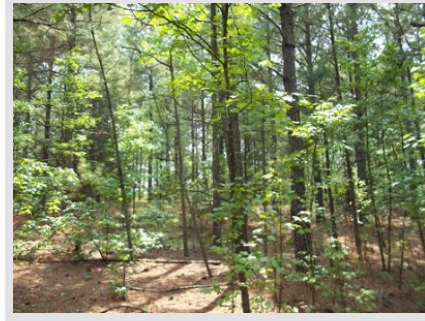


30 Acres - Saluda County, South Carolina
Tract A653 (SOLD)



Acreage

29.76 +/- Acres

General Description

Excellent small tract that has great potential. Very good timber growing on property. Small stream has potential for a pond and is in an excellent location between Monetta and Johnson. This would make a good home site or a great recreational tract. TM #150-14

Location / Directions:

From Monetta take Hwy 23 west. Turn right on Greenview Lane. Tract is on your right. Look for Advance Land and Timber signs.

Agent:

Aerial Map 