

1,323 Acres - Kershaw County, South Carolina

Tract A699 (SOLD)



Acreage

1323.31 Acres

General Description

If you are looking for a large timberland investment with great access at multiple points and excellent stands of loblolly pines with various ages, here is a tract that you should consider. The parcel consists of 1,323.31 +/- acres located in Kershaw County, SC approximately 6 miles north of the community of Camden. Due to the various age classes of loblolly, this property should yield extensive cash flow over the future years. Property has a nice roll in the topography with a hardwood creek dividing the parcel. Excellent deer and turkey hunting.

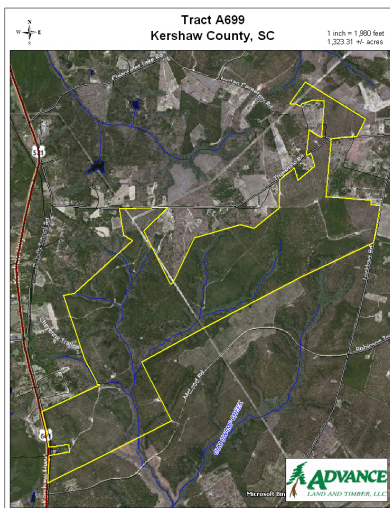
Location / Directions:

From I-20, take Camden/Hwy 521 exit. Travel north on Hwy 521 through Camden. Property is approximately 8 miles north of Camden on the right hand side of the highway, just past McLeod Road. Look for Advance Land and Timber signs.

Agent:

Carwin Owens
434-841-0784

Aerial Map



The information provided on this map is believed to be accurate and is based on the best information available at the time, however, this information is in no way guaranteed. www.advancelandandtimber.com 1-800-860-9509