

## 6 Acres - Horry County, South Carolina

Tract A725 B (SOLD)



### Acreage

6 +/- acres remaining

### General Description

Remaing parcel consists of an excellent stand of a 6 acres home site. Excellent road frontage. Conveniently located to North Myrtle Beach. This parcel will make for an excellent residential investment.

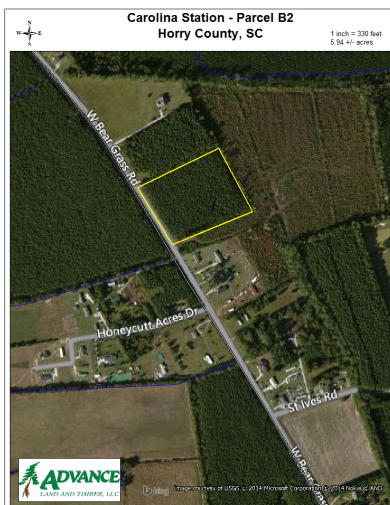
### Location / Directions:

From North myrtle Beach travel west on Hwy 9 to Longs Community. Turn left on Hwy 905 toward Conway. Travel approximately 3 miles and turn right on West Bear Grass Road. Go approximately .5 mile and parcel fronts on the right of Bear Grass Road. Look for Advance Land and Timber signs.

### Agent:

Carwin Owens  
434-841-0784

### Aerial Map



The information provided on this map is believed to be accurate and is based on the best information available at this time, however, this information is in no way guaranteed. [www.advancelandandtimber.com](http://www.advancelandandtimber.com) 1-800-800-8909