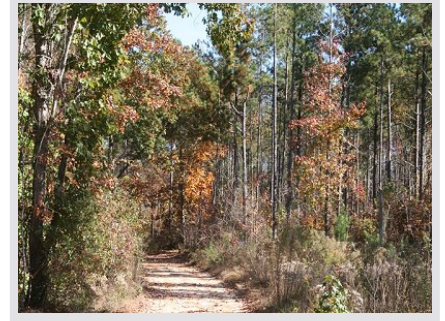


204 Acres - Banks County, Georgia

Tract A600 (SOLD)



Acreage

204 Acres

General Description

Excellent timber and recreational land investment. 154 acres of 25 year old merchantable pine plantation with the balance (50 acres) in merchantable hardwoods/creek bottoms. Approximately 3,500 feet of graded dirt road frontage.

Location / Directions:

This tract is located just west of Old U.S. Highway 441 in Banks County, GA approximately 4.5 miles north of Homer. The property is +/-50 minutes from the north perimeter of Atlanta (via I-85) and +/-10 minutes from Commerce and I-85/Exit 149 (U.S. 441). Close proximity to Gainesville, Toccoa, Cornelia, Commerce and Athens. Fronts on Peyton Road. From Commerce Exit go North on 441 for approximately 10 to 15 minutes until you come to Dot's Produce. Take a left on Sample Scale Road and go couple of miles to first dirt road on right which is Peyton Road, see Advance Land and Timber signs on left.

Agent:

Carwin Owens
434-841-0784

Aerial Map 