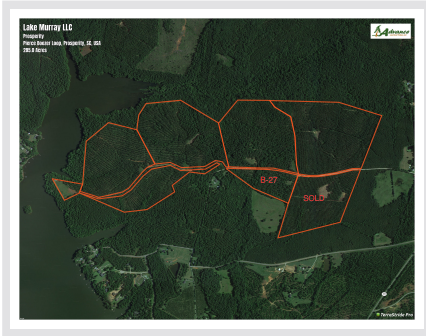


16 Acres - Newberry County, South Carolina

Tract B27 (New Listing)



Acreage

16 +/- Acres

General Description

This property is located in Prosperity, Newberry County, just off Hwy 391 on Pierce Boozer Loop Rd. It consists of 16 acres of pine plantation that are 44 years old and have tremendous value. There is already a gate and a cleared area for a building or food plot. It also has an excellent internal road system allowing you to access corner to corner. This tract is an ideal setting for a permanent residential site, hunting property, or country getaway that is only minutes away from the Saluda River and Lake Murray.

Location / Directions:

From Lexington:

Travel Hwy 378 to traffic circle and take 391 toward Prosperity. Travel approximately 6 miles and turn left onto the 2nd entrance of Pierce Boozer Loop Road. Travel about .80 miles, and parcel fronts on left. Look for Advance Land and Timber signs.

From Newberry:

Travel Hwy 76 to Hwy 391 and continue approximately 7.3 miles and turn right onto Pierce Boozer Loop Road. Travel about .80 miles, and parcel fronts on left. Look for Advance Land and Timber signs.

Agent:

Cole McMillan
803-960-4630

Aerial Map 

