

**131 Acres - Bedford County, Virginia**  
Tract A860 (SOLD)



### Acreage

130.5 acres

### General Description

130 acres located 14 miles west of Lynchburg, VA. This tract has approximately 100 acres of pasture land and 30 acres of mature hardwoods. The farm fronts State Rt 707 (Ephesus Road) and also has additional access by deeded right of way to State Rt 707. The topography is gentle rolling with views of the Blue-ridge mountains and the Peaks of Otter. The soils are primarily Cullen and Mecklenburg loam excellent for crop and hay. A creek fed by several springs flows through the farm year round. This property is an excellent opportunity for a cattle farm investment, estate and hunting opportunities. The farm is located in one of the best deer and turkey hunting areas in Virginia.

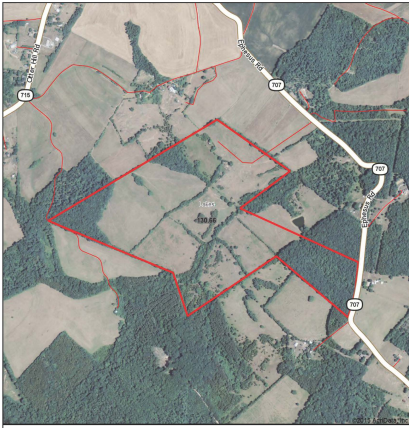
Location / Directions: 

Shown by appointment.

Agent:

Aerial Map 

Aerial Map



map center: 37° 14' 45.91", 79° 20' 34.19"  
scale: 9995



Bedford County  
Virginia



3/30/2015

Aerial photography provided by Aerial Photography Field Office