

**683 Acres - Horry County, South Carolina**  
**Tract A725 K (SOLD)**



**Acreage**

683.3 +/- Acres

**General Description**

Consists of 683 acres of pine regeneration as well as residential cut of a 1999 stand of loblolly pine. This parcel has frontage on Hemmingway Road as well as a 50 ft. fee simple right-a-way to Hwy 9. This parcel surrounds a purposed mitigation bank which would make for an excellent recreational and timberland investment. Conveniently located to North Myrtle Beach. Parcel also is adjoined by Long Bay Country Club which could potentially have future development.

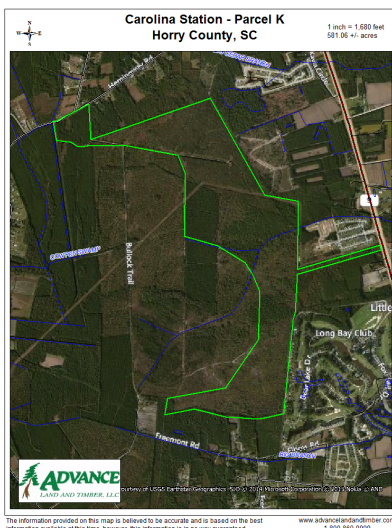
**Location / Directions:** 

From North Myrtle Beach travel west on Hwy 9 to Longs Community. Turn left on Hwy 905 toward Conway. Travel approximately 3 miles and turn right on Bear Grass Road. Travel approximately 1 1/2 miles, turn right on Hemmingway Road. Tract is approximately 1 1/2 miles and fronts on Hemmingway Road across from Cedar Branch Road.

**Agent:**

Carwin Owens  
 434-841-0784

**Aerial Map** 



The information provided on this map is believed to be accurate and is based on the best information available at this time, however, this information is in no way guaranteed. www.advancelandandtimber.com 1-800-850-9909