

832 Acres - Currituck County, North Carolina

Tract A842 (SOLD)



Acreage

832 +/- acres

General Description

832 acre timber tract located in Currituck County, NC approximately 13 miles from Elizabeth City, NC and an hr South of Norfolk, VA. This is a good investment for growing timber or convert to cropland, the soils are very productive and the tract is well drained with ditches throughout the property, all the interior roads are well built to handle heavy equipment. The tract lays flat with 472 acres of 1980 mixed pine/hardwoods, 211 acres 2002 mixed pine/hardwoods and 61 acres of 2013 planted loblolly pine. There is significant timber on this tract with a strong future for timber investment due to the high quality soils. Access is by Deeded Right of Way through adjoining land which is primarily cropland.

Improvements include a small cabin used during hunting season with no electricity or running water. This tract has excellent hunting for deer and black bear with record size bears being harvested every year. This Tract has a Weyerhaeuser mineral rights reservation.

Location / Directions:

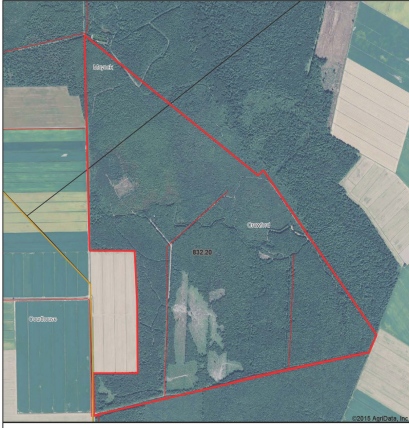
Call for appointment - Carwin Owens 434-841-0784

Agent:

Carwin Owens
434-841-0784

Aerial Map

Aerial Map



map center: 36° 28' 52.65" N 79° 0' 54.03" W
scale: 1:1465



Currituck County
North Carolina



5/18/2015