

# LS473—179.32 +/- acres in Chester County, SC



**Investment: \$448,300 (\$2,500/acre)**

## Property Description

If you are looking for a "Great Investment", look no more. This parcel has interstate frontage on I-77 (west side), over 4,000 ft. of paved road frontage on Old Catholic Church Road and over 1 mile of frontage on I-77. Nice stand of 24 yr. old Loblolly for instant cash flow. Less than 45 minutes from Charlotte as well as Columbia. Parcel can be subdivided as well. This one won't last long!

## Driving Directions

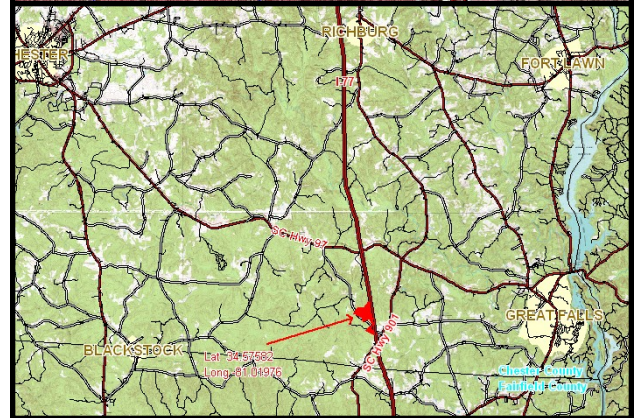
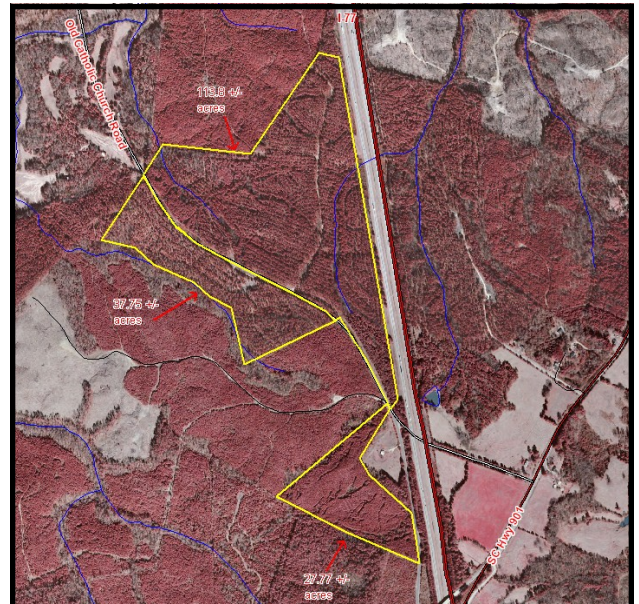
Exit off I-77 on Exit 55 (Hwy. 97) go west toward the town of Chester. Approximately 1 miles turn left onto Old Catholic Church Road. Going south on Old Catholic Church Road go approximately 2 miles. Property marked with signs on both sides of road. Old Catholic Church Road dead ends into Hwy. 901. Viewing from I-77 property is on west side of interstate between the over pass of Hwy. 901 and the exit of Hwy. 97.

Latitude 34.57582 Longitude -81.04976



**ADVANCE**  
LAND AND TIMBER, LLC

[www.advancelandandtimber.com](http://www.advancelandandtimber.com)



### Can be subdivided!

113.8 acres—\$301,570 (\$2,650/acre)  
37.75 acres—\$107,588 (\$2,850/acre)  
27.77 acres—\$ 79,145 (\$2,850/acre)

Advance Land and Timber, LLC  
Mark McMillan  
[markm@advancelandandtimber.com](mailto:markm@advancelandandtimber.com)  
[www.advancelandandtimber.com](http://www.advancelandandtimber.com)  
803-957-9503 office  
803-359-0359 fax  
205 West Butler Street  
Lexington, SC 29072