

LB2003—392.1 +/- acres in Fairfield County, SC



ADVANCE
LAND AND TIMBER, LLC

www.advancelandandtimber.com

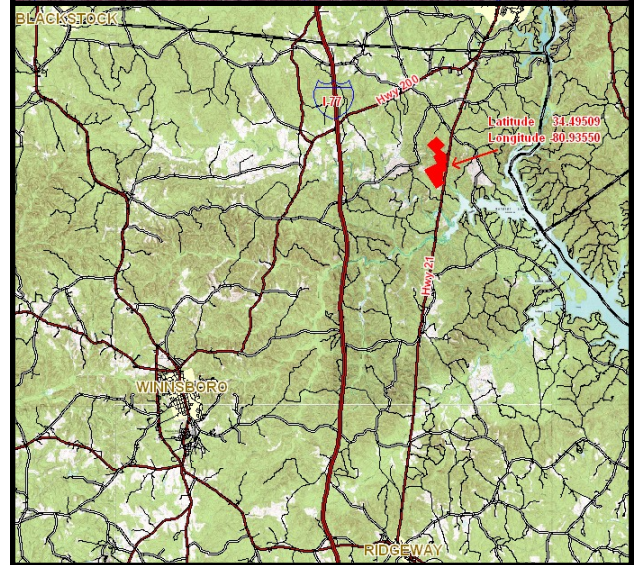
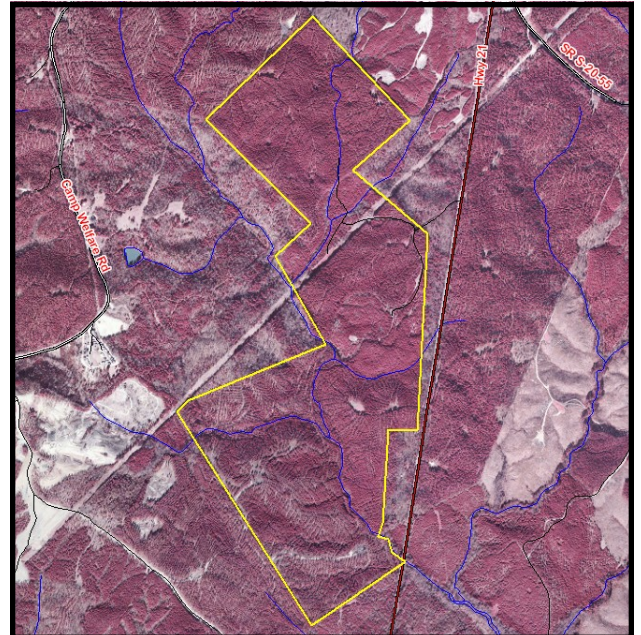
Investment: \$943,000 (\$2,405/acre)

Property Description

Nice 392 acre timber/recreational tract off US Hwy 21 north of Ridgeway. Good stands of growing timber in game rich Fairfield County. TMS #059-00-00-010

Driving Directions

From Ridgeway: Take US 21 north past Flint Hill. Look for Advance Land and Timber signs on the left.



Advance Land and Timber, LLC
Mark McMillan
markm@advancelandandtimber.com
www.advancelandandtimber.com
803-957-9503 office
803-359-0359 fax
205 West Butler Street
Lexington, SC 29072