

LB2001—103.7 +/- acres in Fairfield County, SC



Investment: \$194,000 (\$1,871/acre)

Property Description

Very attractive 103 + acre tract near Jenkinsville with beautiful timber and abundant wildlife. Nice creeks with hardwoods give property diversity of habitat.
TMS #1930004009000

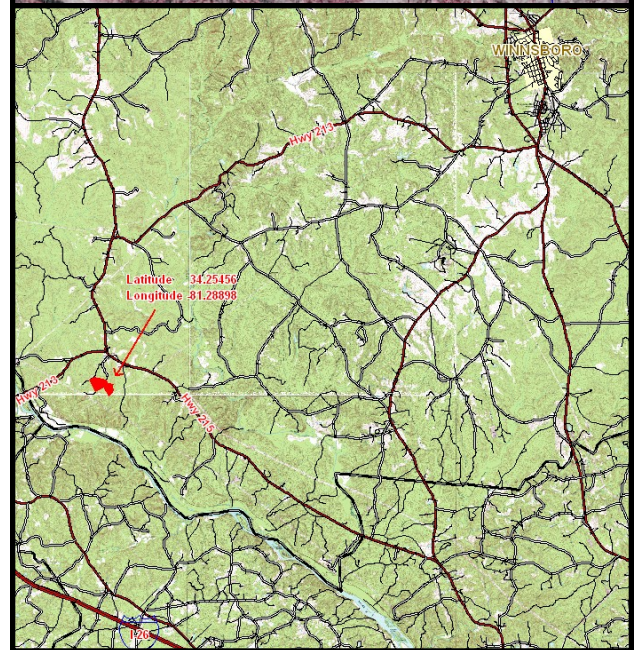
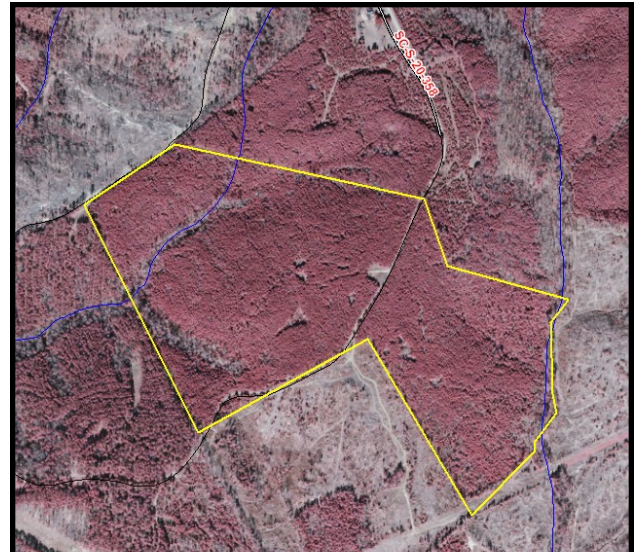
Driving Directions

From Columbia: Take SC Hwy 215 North toward Jenkinsville. At Jenkinsville Post Office turn left onto SSR 20-358 (McKinnin Road). When paved road ends proceed another 2/10 of a mile on the dirt road. Look for Advance Land and Timber signs.



ADVANCE
LAND AND TIMBER, LLC

www.advancelandandtimber.com



Advance Land and Timber, LLC
Mark McMillan
markm@advancelandandtimber.com
www.advancelandandtimber.com
803-957-9503 office
803-359-0359 fax
205 West Butler Street