

Exhibit "A2"

A piece, parcel, or tract of land lying and being situated in Abbeville County, South Carolina

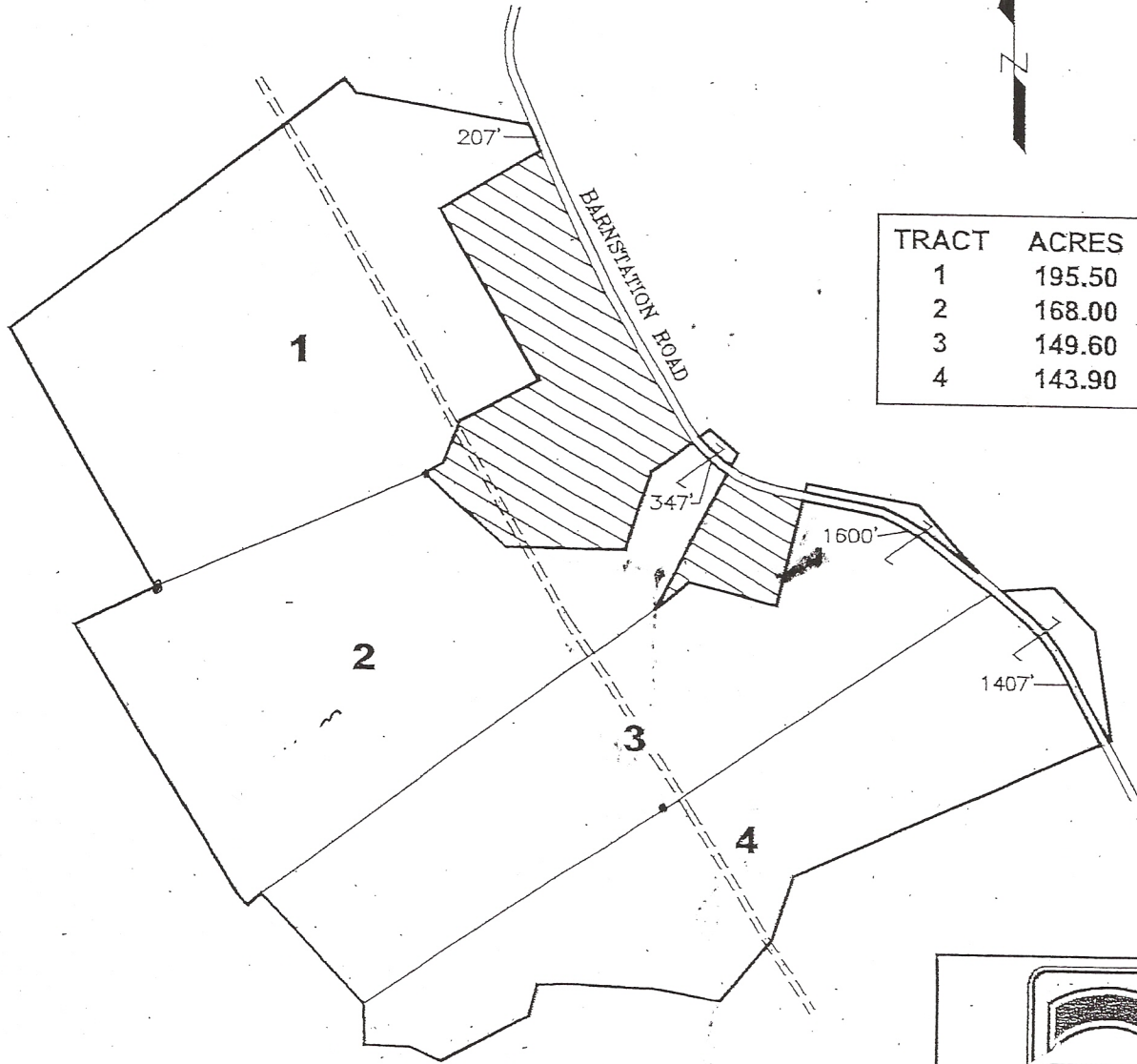
*Andy*

**PROPERTY "108"**  
**657.00 TOTAL AC.**

*McL*  
*STA*

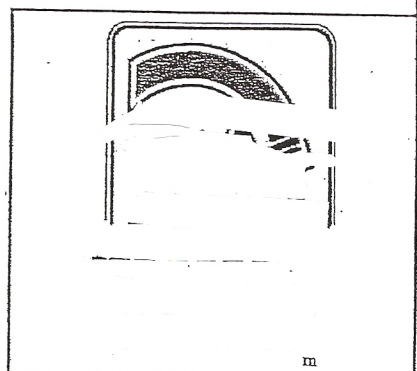


TRACT	ACRES
1	195.50
2	168.00
3	149.60
4	143.90



657.00 TOTAL ACRES±

NOTE: THIS SKETCH WAS DRAWN FROM PLATS AND AN AERIAL PHOTOGRAPH. AREAS AND DISTANCES ARE SUBJECT TO CHANGE UPON ACTUAL FIELD SURVEY.



*W - RP*

*#* *0*