

A478—162 +/- acres in Robeson County, NC



Investment: \$257,904 (\$1,592/acre)

Property Description

If you are looking for a nice hunting/recreational tract with a timber investment, look no further. This tract has a little bit of everything. Timber, re-generation hardwood with replanted pine. Road frontage, great for fishing, canoeing, and duck hunting. Truly an outdoorsman's dream. Over 3,000 feet of Lumber River frontage. ! You need to see this one!

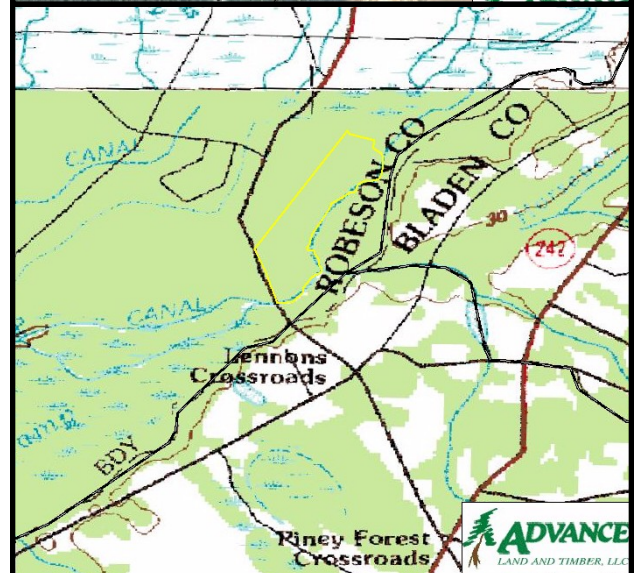
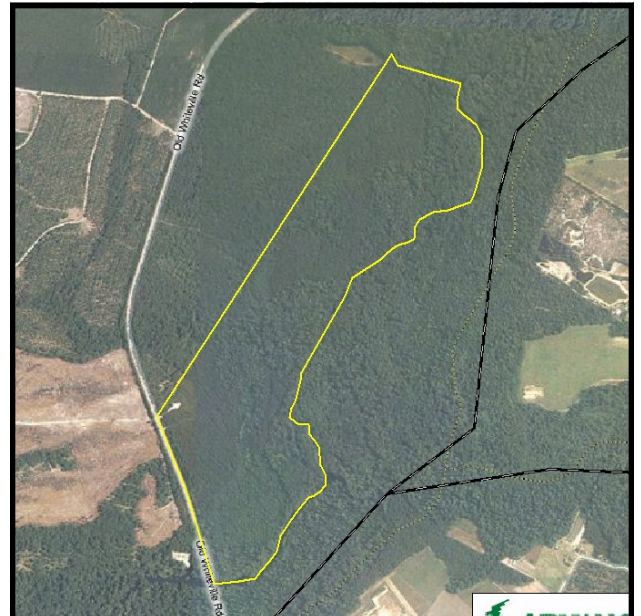
Driving Directions

From Lumberton, take Old Whiteville Rd approx 4-5 miles. Take Burnt Island Rd approx 15-20 miles. Property is on left just before entering Columbus County. Look for Advance Land and Timber signs.



ADVANCE
LAND AND TIMBER, LLC

www.advancelandandtimber.com



Advance Land and Timber, LLC
Mark McMillan
markm@advancelandandtimber.com
www.advancelandandtimber.com
803-957-9503 office
803-359-0359 fax
205 West Butler Street
Lexington, SC 29072